

Product Name: SP1 Rabbit Polyclonal Antibody**Catalog #: APRab01339**

For research use only.

Summary

Description	Rabbit polyclonal Antibody
Host	Rabbit
Application	WB,IHC,ICC/IF
Reactivity	Human
Conjugation	Unconjugated
Modification	Unmodified
Isotype	IgG
Clonality	Polyclonal
Form	Liquid
Concentration	1mg/ml
Storage	Aliquot and store at -20°C (valid for 12 months). Avoid freeze/thaw cycles.
Shipping	Ice bags
Buffer	Rabbit IgG in phosphate buffered saline , pH 7.4, 150mM NaCl, 0.02% sodium azide and 50% glycerol.
Purification	Affinity Chromatography

Application

Dilution Ratio	WB 1:500-1:1000,IHC 1:50-1:100,ICC/IF 1:50-1:200
Molecular Weight	Calculated MW: 81 kDa; Observed MW: 90 kDa

Antigen Information

Gene Name	SP1
Alternative Names	SP1; TSFP1; Transcription factor Sp1
Gene ID	6667
SwissProt ID	P08047
Immunogen	Recombinant protein of human SP1

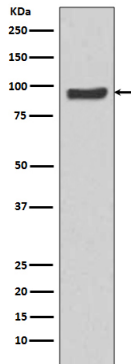
Background

SP1 is a transcription factor of the Sp1 C2H2-type zinc-finger protein family. Phosphorylated and activated by MAPK. Dephosphorylation by PTEN inhibits DNA binding. Binds to p38 in the nucleus.

Research Area

Epigenetics and Nuclear Signaling

Image Data



Western blot analysis of SP1 in HeLa lysates using SP1 antibody.