
Product Name: CD8 alpha Rabbit Polyclonal Antibody**Catalog #: APRab01333**

For research use only.

Summary

Description	Rabbit polyclonal Antibody
Host	Rabbit
Application	WB,IHC,ICC/IF
Reactivity	Human
Conjugation	Unconjugated
Modification	Unmodified
Isotype	IgG
Clonality	Polyclonal
Form	Liquid
Concentration	1mg/ml
Storage	Aliquot and store at -20°C (valid for 12 months). Avoid freeze/thaw cycles.
Shipping	Ice bags
Buffer	Rabbit IgG in phosphate buffered saline , pH 7.4, 150mM NaCl, 0.02% sodium azide and 50% glycerol.
Purification	Affinity Chromatography

Application

Dilution Ratio	WB 1:500-1:1000,IHC 1:50-1:100,ICC/IF 1:50-1:200
Molecular Weight	Calculated MW: 26 kDa; Observed MW: 32 kDa

Antigen Information

Gene Name	CD8A
Alternative Names	CD8A; MAL; T-cell surface glycoprotein CD8 alpha chain; T-lymphocyte differentiation antigen T8/Leu-2; CD antigen CD8a
Gene ID	925
SwissProt ID	P01732
Immunogen	A synthetic peptide of human CD8 alpha

Background

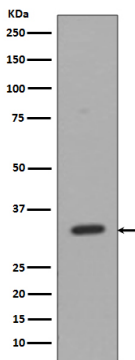
Identifies cytotoxic/suppressor T-cells that interact with MHC class I bearing targets. CD8 is thought to play a role in the process

of T-cell mediated killing. CD8 alpha chains binds to class I MHC molecules alpha-3 domains.

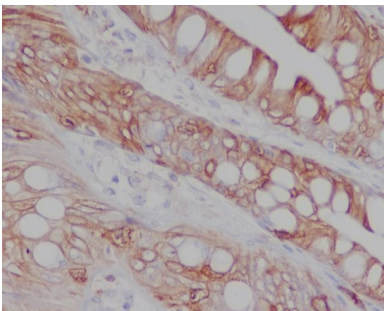
Research Area

Immunology

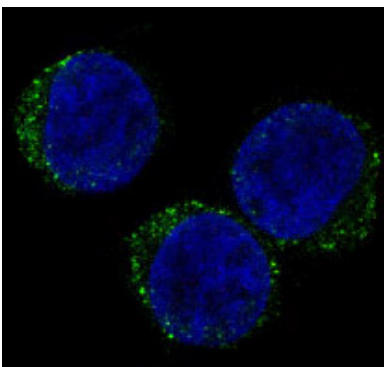
Image Data



Western blot analysis of CD8 in Jurkat lysates using CD8 alpha antibody.



Immunohistochemistry analysis of paraffin-embedded Human colon using CD8 antibody. High-pressure and temperature Sodium Citrate pH 6.0 was used for antigen retrieval.



Immunofluorescence analysis of CD8 alpha in Jurkat using CD8 antibody.

Western blot analysis of CD8 alpha in Raji lysates using CD8 antibody.

