
Product Name: ASK1 Rabbit Polyclonal Antibody**Catalog #: APRab01327**

For research use only.

Summary

Description	Rabbit polyclonal Antibody
Host	Rabbit
Application	WB,IHC,ICC/IF,FC
Reactivity	Human,Mouse
Conjugation	Unconjugated
Modification	Unmodified
Isotype	IgG
Clonality	Polyclonal
Form	Liquid
Concentration	1mg/ml
Storage	Aliquot and store at -20°C (valid for 12 months). Avoid freeze/thaw cycles.
Shipping	Ice bags
Buffer	Rabbit IgG in phosphate buffered saline , pH 7.4, 150mM NaCl, 0.02% sodium azide and 50% glycerol.
Purification	Affinity Chromatography

Application

Dilution Ratio	WB 1:500-1:1000,IHC 1:50-1:100,ICC/IF 1:50-1:200,FC 1:50-1:100
Molecular Weight	Calculated MW: 155 kDa; Observed MW: 155 kDa

Antigen Information

Gene Name	MAP3K5 MAP3K5; ASK1; MAPKKK5; MEKK5; Mitogen-activated protein kinase kinase kinase 5;
Alternative Names	Apoptosis signal-regulating kinase 1; ASK-1; MAPK/ERK kinase kinase 5; MEK kinase 5; MEKK 5
Gene ID	4217
SwissProt ID	Q99683
Immunogen	A synthetic peptide of human ASK1

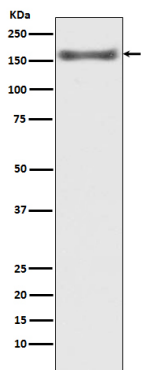
Background

Mitogen-activated protein kinase (MAPK) signaling cascades include MAPK or extracellular signal-regulated kinase (ERK), MAPK kinase (MKK or MEK), and MAPK kinase kinase (MAPKKK or MEKK). MAPKK kinase/MEKK phosphorylates and activates its downstream protein kinase, MAPK kinase/MEK, which in turn activates MAPK.

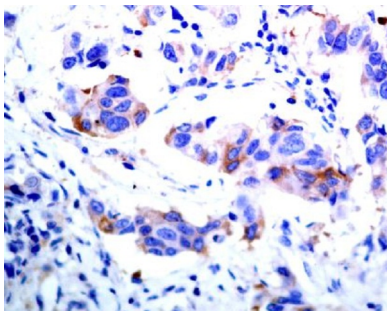
Research Area

Cell Biology

Image Data



Western blot analysis of ASK1 in HeLa lysates using ASK1 antibody.



Immunohistochemistry analysis of paraffin-embedded Human breast cancer using ASK1 antibody. High-pressure and temperature Sodium Citrate pH 6.0 was used for antigen retrieval.