

---

**Product Name: Phospho-PYK2 (Tyr402) Rabbit Polyclonal Antibody****Catalog #: APRab00952**

For research use only.

**Summary**

<b>Description</b>	Rabbit polyclonal Antibody
<b>Host</b>	Rabbit
<b>Application</b>	WB,IHC,ICC/IF
<b>Reactivity</b>	Human,Mouse,Rat
<b>Conjugation</b>	Unconjugated
<b>Modification</b>	Phosphorylated
<b>Isotype</b>	IgG
<b>Clonality</b>	Polyclonal
<b>Form</b>	Liquid
<b>Concentration</b>	1mg/ml
<b>Storage</b>	Aliquot and store at -20°C (valid for 12 months). Avoid freeze/thaw cycles.
<b>Shipping</b>	Ice bags
<b>Buffer</b>	Liquid in PBS containing 50% glycerol, 0.5% protective protein and 0.02% sodium azide, pH 7.3.
<b>Purification</b>	Affinity Purification

**Application**

<b>Dilution Ratio</b>	WB 1:500-1:1000,IHC 1:50-1:100,ICC/IF 1:100-1:200
<b>Molecular Weight</b>	Calculated MW: 116 kDa; Observed MW: 116 kDa

**Antigen Information**

<b>Gene Name</b>	PTK2B PTK2B; FAK2; PYK2; RAFTK; Protein-tyrosine kinase 2-beta; Calcium-dependent tyrosine
<b>Alternative Names</b>	kinase; CADTK; Calcium-regulated non-receptor proline-rich tyrosine kinase; Cell adhesion kinase beta; CAK-beta; CAKB; Focal adhesion kinase 2; FADK 2; Pro
<b>Gene ID</b>	2185
<b>SwissProt ID</b>	Q14289
<b>Immunogen</b>	A synthetic Phosphorylated peptide corresponding to residues target protein

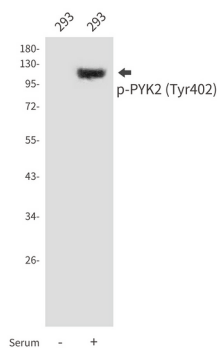
**Background**

PYK2 a nonreceptor tyrosine kinase of the Fak family. Predominantly expressed in the cells derived from hematopoietic lineages and in the central nervous system. PYK2 is one of the signaling mediators for G-protein-coupled receptors. Involved in calcium induced regulation of ion channel and activation of the map kinase signaling pathway. Interacts with the SH2 domain of Grb2.

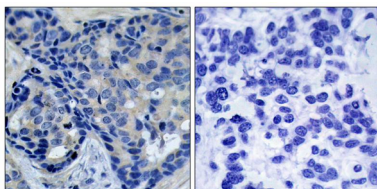
## Research Area

Signal Transduction

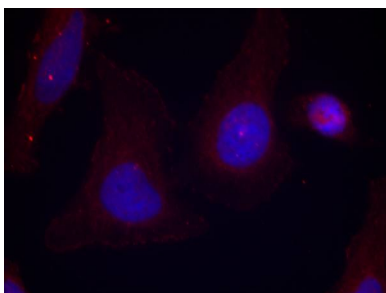
## Image Data



Western blot analysis of Phospho-PYK2 (Tyr402) in 293 lysates using Phospho-PYK2 (Tyr402) antibody.



Immunohistochemistry analysis of paraffin-embedded Human breast carcinoma tissue using Pyk2(Phospho-Tyr402) antibody. High-pressure and temperature Sodium Citrate pH 6.0 was used for antigen retrieval. Sample with blocking peptide on the right.



Immunofluorescence analysis of Phospho-PYK2 (Tyr402) in HeLa cells using Pyk2(Phospho-Tyr402) antibody (red).