
Product Name: Phospho-Estrogen Receptor alpha (Ser167) Rabbit Polyclonal Antibody
Catalog #: APRab00948

For research use only.

Summary

Description	Rabbit polyclonal Antibody
Host	Rabbit
Application	WB,IHC,ICC/IF
Reactivity	Human
Conjugation	Unconjugated
Modification	Phosphorylated
Isotype	IgG
Clonality	Polyclonal
Form	Liquid
Concentration	1mg/ml
Storage	Aliquot and store at -20°C (valid for 12 months). Avoid freeze/thaw cycles.
Shipping	Ice bags
Buffer	Liquid in PBS containing 50% glycerol, 0.5% protective protein and 0.02% sodium azide, pH 7.3.
Purification	Affinity Purification

Application

Dilution Ratio	WB 1:500-1:1000,IHC 1:50-1:100,ICC/IF 1:100-1:200
Molecular Weight	Calculated MW: 66 kDa; Observed MW: 66 kDa

Antigen Information

Gene Name	ESR1
Alternative Names	ESR1; Era; Eralpha; Estrogen receptor; Estradiol receptor; ER-alpha; Estrogen receptor 1; NR3A1; ER; ESR; ESRA; Estrogen receptor alpha
Gene ID	2099
SwissProt ID	P03372
Immunogen	A synthetic Phosphorylated peptide corresponding to residues target protein

Background

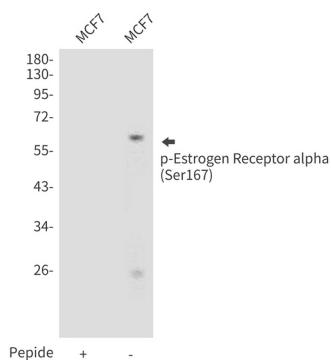
ER (estrogen receptor 1) a member of the steroid receptor superfamily, contains highly conserved DNA binding (DBD) and

ligand binding domains (LBD). Through its estrogen-independent and estrogen-dependent activation domains (AF-1 and AF-2, respectively), ER regulates transcription by recruiting coactivator proteins and interacting with general transcriptional machinery. Phosphorylation provides an important mechanism to regulate ER activity. ER is phosphorylated on multiple sites.

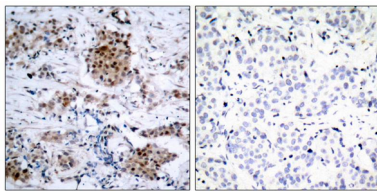
Research Area

Signal Transduction

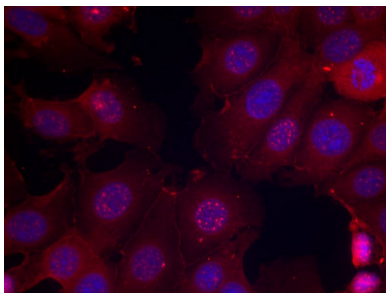
Image Data



Western blot analysis of Phospho-Estrogen Receptor alpha (Ser167) in MCF-7 lysates using Phospho-Estrogen Receptor alpha (Ser167) antibody.



Immunohistochemistry analysis of paraffin-embedded Human breast carcinoma tissue using Estrogen Receptor alpha (Phospho-Ser167) antibody. High-pressure and temperature Sodium Citrate pH 6.0 was used for antigen retrieval. Sample with blocking peptide on the right.



Immunofluorescence analysis of Phospho-Estrogen Receptor alpha (Ser167) in MCF-7 cells using Estrogen Receptor alpha (Phospho-Ser167) antibody (red).