
Product Name: Phospho-EDG1 (Thr236) Rabbit Polyclonal Antibody**Catalog #: APRab00946**

For research use only.

Summary

Description	Rabbit polyclonal Antibody
Host	Rabbit
Application	WB,ICC/IF,ELISA
Reactivity	Human,Mouse,Rat
Conjugation	Unconjugated
Modification	Phosphorylated
Isotype	IgG
Clonality	Polyclonal
Form	Liquid
Concentration	1mg/ml
Storage	Aliquot and store at -20°C (valid for 12 months). Avoid freeze/thaw cycles.
Shipping	Ice bags
Buffer	Liquid in PBS containing 50% glycerol, 0.5% protective protein and 0.02% sodium azide, pH 7.3.
Purification	Affinity Purification

Application

Dilution Ratio	WB 1:500-1:1000,ICC/IF 1:100-1:200,ELISA 1:5000-1:20000
Molecular Weight	Calculated MW: 43 kDa; Observed MW: 42 kDa

Antigen Information

Gene Name	S1PR1 S1PR1; CHEDG1; EDG1; Sphingosine 1-phosphate receptor 1; S1P receptor 1; S1P1;
Alternative Names	Endothelial differentiation G-protein coupled receptor 1; Sphingosine 1-phosphate receptor Edg-1; S1P receptor Edg-1; CD antigen CD363
Gene ID	1901
SwissProt ID	P21453
Immunogen	The antiserum was produced against synthesized peptide derived from human S1P Receptor EDG1 around the phosphorylation site of Thr236. AA range:206-255

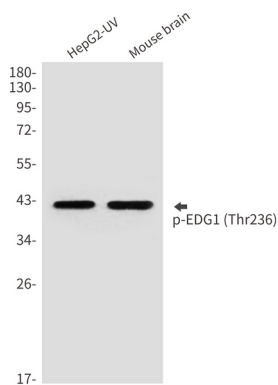
Background

Receptor for the lysosphingolipid sphingosine 1-phosphate (S1P). S1P is a bioactive lysophospholipid that elicits diverse physiological effect on most types of cells and tissues. This inducible epithelial cell G-protein-coupled receptor may be involved in the processes that regulate the differentiation of endothelial cells.

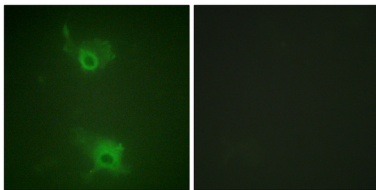
Research Area

Cell Biology

Image Data



Western blot analysis of Phospho-EDG1 (Thr236) in HepG2, mouse brain lysates using Phospho-EDG1 (Thr236) antibody.



Immunofluorescence analysis of Phospho-EDG1 (Thr236) in COS7 using Phospho-EDG1 (Thr236) antibody. The picture on the right is blocked using the Phospho-peptide.