

Product Name: Phospho-VEGF Receptor 2 (Tyr1175) Rabbit Polyclonal Antibody
Catalog #: APRab00945

For research use only.

Summary

Description	Rabbit polyclonal Antibody
Host	Rabbit
Application	IHC, ICC/IF
Reactivity	Human, Mouse, Rat
Conjugation	Unconjugated
Modification	Phosphorylated
Isotype	IgG
Clonality	Polyclonal
Form	Liquid
Concentration	1mg/ml
Storage	Aliquot and store at -20°C (valid for 12 months). Avoid freeze/thaw cycles.
Shipping	Ice bags
Buffer	Liquid in PBS containing 50% glycerol, 0.5% protective protein and 0.02% sodium azide, pH 7.3.
Purification	Affinity Purification

Application

Dilution Ratio	IHC 1:50-1:100, ICC/IF 1:100-1:200
Molecular Weight	-

Antigen Information

Gene Name	KDR KDR; FLK1; VEGFR2; Vascular endothelial growth factor receptor 2; VEGFR-2; Fetal liver kinase
Alternative Names	1; FLK-1; Kinase insert domain receptor; KDR; Protein-tyrosine kinase receptor flk-1; CD antigen CD309
Gene ID	3791
SwissProt ID	P35968
Immunogen	A synthetic Phosphorylated peptide corresponding to residues target protein

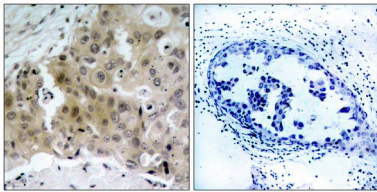
Background

VEGFR-2 is a receptor tyrosine kinase of the VEGFR family. High affinity receptor for VEGF and VEGF-C. Ligand binding induces autophosphorylation and activation. Activated receptor recruits proteins including Shc, GRB2, PI3K, Nck, SHP-1 and SHP-2.

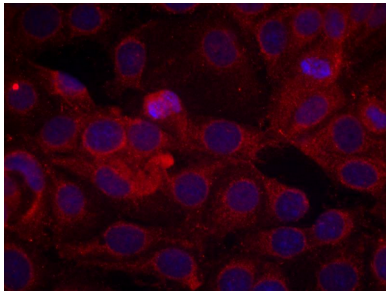
Research Area

Epigenetics and Nuclear Signaling

Image Data



Immunohistochemistry analysis of paraffin-embedded Human breast carcinoma tissue using Phospho-VEGF Receptor 2 (Tyr1175) antibody. High-pressure and temperature Sodium Citrate pH 6.0 was used for antigen retrieval. Sample with blocking peptide on the right.



Immunofluorescence analysis of Phospho-VEGF Receptor 2 (Tyr1175) in MCF-7 cells using Phospho-VEGF Receptor 2 (Tyr1175) antibody, and DAPI (blue).