

Product Name: Phospho-Leptin Receptor (Tyr1141) Rabbit Polyclonal Antibody**Catalog #: APRab00943**

For research use only.

Summary

Description	Rabbit polyclonal Antibody
Host	Rabbit
Application	WB,ELISA
Reactivity	Human,Mouse
Conjugation	Unconjugated
Modification	Phosphorylated
Isotype	IgG
Clonality	Polyclonal
Form	Liquid
Concentration	1mg/ml
Storage	Aliquot and store at -20°C (valid for 12 months). Avoid freeze/thaw cycles.
Shipping	Ice bags
Buffer	Liquid in PBS containing 50% glycerol, 0.5% protective protein and 0.02% sodium azide, pH 7.3.
Purification	Affinity Purification

Application

Dilution Ratio	WB 1:500-1:1000,ELISA 1:5000-1:20000
Molecular Weight	Calculated MW: 132 kDa; Observed MW: 132 kDa

Antigen Information

Gene Name	LEPR
Alternative Names	Leptin receptor; LEP-R; HuB219 OB receptor; OB-R; CD295; LEPR; DB; OBR
Gene ID	3953
SwissProt ID	P48357
Immunogen	A synthetic Phosphorylated peptide corresponding to residues target protein

Background

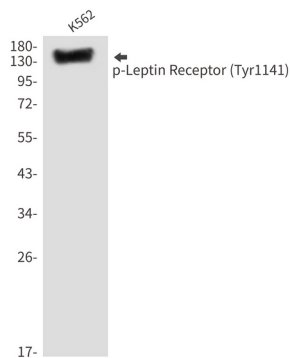
On ligand binding, mediates LEP central and peripheral effects through the activation of different signaling pathways such as JAK2/STAT3 and MAPK cascade/FOS. In the hypothalamus, LEP acts as an appetite-regulating factor that induces a decrease in

food intake and an increase in energy consumption by inducing anorexigenic factors and suppressing orexigenic neuropeptides, also regulates bone mass and secretion of hypothalamo-pituitary-adrenal hormones (By similarity).

Research Area

Signal Transduction

Image Data



Western blot analysis of Phospho-Leptin Receptor (Tyr1141) in K562 lysates using Phospho-Leptin Receptor (Tyr1141) antibody.