

**Product Name: Phospho-Syk (Tyr348) Rabbit Polyclonal Antibody****Catalog #: APRab00940**

For research use only.

**Summary**

|                      |  |
|----------------------|--|
| <b>Description</b>   | Rabbit polyclonal Antibody   |
| <b>Host</b>          | Rabbit   |
| <b>Application</b>   | WB,IHC,ELISA   |
| <b>Reactivity</b>    | Human,Mouse,Rat,Monkey   |
| <b>Conjugation</b>   | Unconjugated   |
| <b>Modification</b>  | Phosphorylated   |
| <b>Isotype</b>       | IgG  |
| <b>Clonality</b>     | Polyclonal   |
| <b>Form</b>          | Liquid   |
| <b>Concentration</b> | 1mg/ml   |
| <b>Storage</b>       | Aliquot and store at -20°C (valid for 12 months). Avoid freeze/thaw cycles.                    |
| <b>Shipping</b>      | Ice bags   |
| <b>Buffer</b>        | Liquid in PBS containing 50% glycerol, 0.5% protective protein and 0.02% sodium azide, pH 7.3. |
| <b>Purification</b>  | Affinity Purification  |

**Application**

|                         |   |
|-------------------------|---|
| <b>Dilution Ratio</b>   | WB 1:500-1:1000,IHC 1:50-1:100,ELISA 1:5000-1:20000 |
| <b>Molecular Weight</b> | Calculated MW: 72 kDa; Observed MW: 72 kDa          |

**Antigen Information**

|                          |   |
|--------------------------|---|
| <b>Gene Name</b>         | SYK   |
| <b>Alternative Names</b> | SYK; Tyrosine-protein kinase SYK; Spleen tyrosine kinase; p72-Syk   |
| <b>Gene ID</b>           | 6850  |
| <b>SwissProt ID</b>      | P43405  |
| <b>Immunogen</b>         | The antiserum was produced against synthesized peptide derived from human SYK around the phosphorylation site of Tyr348. AA range:314-363 |

**Background**

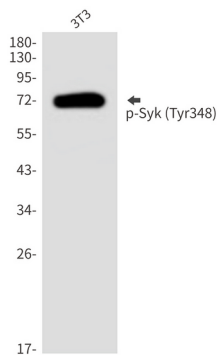
This gene encodes a member of the family of non-receptor type Tyr protein kinases. This protein is widely expressed in

hematopoietic cells and is involved in coupling activated immunoreceptors to downstream signaling events that mediate diverse cellular responses, including proliferation, differentiation, and phagocytosis. It is thought to be a modulator of epithelial cell growth and a potential tumour suppressor in human breast carcinomas. Alternatively spliced transcript variants encoding different isoforms have been found for this gene.

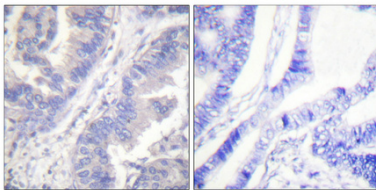
## Research Area

Cardiovascular

## Image Data



Western blot analysis of Phospho-Syk (Tyr348) in 3T3 lysates using Phospho-Syk (Tyr348) antibody.



Immunohistochemistry analysis of paraffin-embedded Human lung cancer using Phospho-Syk (Tyr348) antibody. High-pressure and temperature Sodium Citrate pH 6.0 was used for antigen retrieval. Sample with blocking peptide on the right.