

Product Name: Phospho-Annexin 2 (Ser26) Rabbit Polyclonal Antibody**Catalog #: APRab00929**

For research use only.

Summary

Description	Rabbit polyclonal Antibody
Host	Rabbit
Application	WB
Reactivity	Human
Conjugation	Unconjugated
Modification	Phosphorylated
Isotype	IgG
Clonality	Polyclonal
Form	Liquid
Concentration	1mg/ml
Storage	Aliquot and store at -20°C (valid for 12 months). Avoid freeze/thaw cycles.
Shipping	Ice bags
Buffer	Liquid in PBS containing 50% glycerol, 0.5% protective protein and 0.02% sodium azide, pH 7.3.
Purification	Affinity Purification

Application

Dilution Ratio	WB 1:500-1:1000
Molecular Weight	Calculated MW: 39 kDa; Observed MW: 39 kDa

Antigen Information

Gene Name	ANXA2
Alternative Names	ANXA2; ANX2; ANX2L4; CAL1H; LPC2D; Annexin A2; Annexin II; Annexin-2; Calpactin I heavy chain; Calpactin-1 heavy chain; Chromobindin-8; Lipocortin II; Placental anticoagulant protein IV; PAP-IV; Protein I; p36
Gene ID	302
SwissProt ID	P07355
Immunogen	A synthetic Phosphorylated peptide corresponding to residues target protein

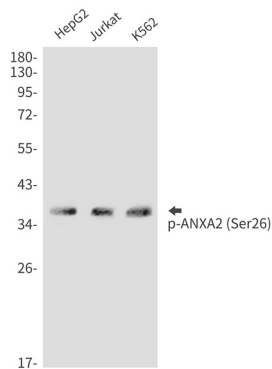
Background

Originally identified as a protein inhibitor of phospholipase A2, annexin A2 has subsequently been shown to interact with an array of protein and non-protein partners, including F-actin, spectrin, SNARE complexes, RNA, and virus particles.

Research Area

Signal Transduction

Image Data



Western blot analysis of Phospho-Annexin 2 (Ser26) in HepG2 lysates using Phospho-ANXA2 (Ser26) antibody.