

**Product Name: Phospho-ATF4 (Ser219) Rabbit Polyclonal Antibody****Catalog #: APRab00926**

For research use only.

**Summary**

<b>Description</b>	Rabbit polyclonal Antibody
<b>Host</b>	Rabbit
<b>Application</b>	WB
<b>Reactivity</b>	Human
<b>Conjugation</b>	Unconjugated
<b>Modification</b>	Phosphorylated
<b>Isotype</b>	IgG
<b>Clonality</b>	Polyclonal
<b>Form</b>	Liquid
<b>Concentration</b>	1mg/ml
<b>Storage</b>	Aliquot and store at -20°C (valid for 12 months). Avoid freeze/thaw cycles.
<b>Shipping</b>	Ice bags
<b>Buffer</b>	Liquid in PBS containing 50% glycerol, 0.5% protective protein and 0.02% sodium azide, pH 7.3.
<b>Purification</b>	Affinity Purification

**Application**

<b>Dilution Ratio</b>	WB 1:500-1:1000
<b>Molecular Weight</b>	Calculated MW: 39 kDa; Observed MW: 39 kDa

**Antigen Information**

<b>Gene Name</b>	ATF4
<b>Alternative Names</b>	Cyclic AMP-dependent transcription factor ATF-4; CREB-2; cAMP-responsive element-binding protein 2; DNA-binding protein TAXREB67
<b>Gene ID</b>	468
<b>SwissProt ID</b>	P18848
<b>Immunogen</b>	A synthetic Phosphorylated peptide corresponding to residues target protein

**Background**

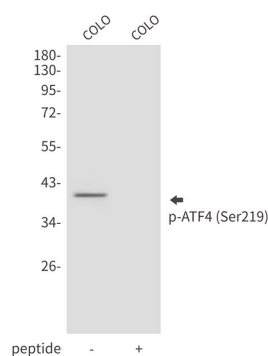
ATF4, an activating transcription factor/cAMP-response element-binding protein family member, functions in the PERK and

eIF2 $\alpha$  ER stress responsive pathway. ER stress represses the translation of the majority of mRNAs, but selectively stimulates the translation of certain mRNAs including that of ATF-4. Induced expression of ATF-4 increases the expression of genes critical for the recovery from ER stress.

## Research Area

Epigenetics and Nuclear Signaling

## Image Data



Western blot analysis of Phospho-ATF4 (Ser219) in COLO lysates using Phospho-ATF4 (Ser219) antibody.