
Product Name: Phospho-FRS2 (Tyr436) Rabbit Polyclonal Antibody**Catalog #: APRab00925**

For research use only.

Summary

Description	Rabbit polyclonal Antibody
Host	Rabbit
Application	WB,IHC
Reactivity	Human
Conjugation	Unconjugated
Modification	Phosphorylated
Isotype	IgG
Clonality	Polyclonal
Form	Liquid
Concentration	1mg/ml
Storage	Aliquot and store at -20°C (valid for 12 months). Avoid freeze/thaw cycles.
Shipping	Ice bags
Buffer	Liquid in PBS containing 50% glycerol, 0.5% protective protein and 0.02% sodium azide, pH 7.3.
Purification	Affinity Purification

Application

Dilution Ratio	WB 1:500-1:1000,IHC 1:50-1:100
Molecular Weight	Calculated MW: 57 kDa; Observed MW: 65 kDa

Antigen Information

Gene Name	FRS2
Alternative Names	Fibroblast growth factor receptor substrate 2; FGFR substrate 2; FGFR-signaling adaptor SNT; Suc1-associated neurotrophic factor target 1; SNT-1
Gene ID	10818
SwissProt ID	Q8WU20
Immunogen	A synthetic Phosphorylated peptide corresponding to residues target protein

Background

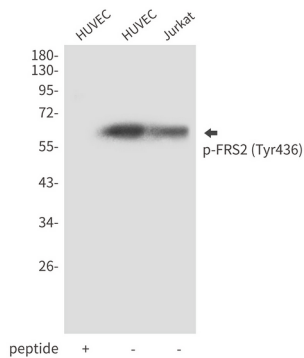
Adapter protein that links FGR and NGF receptors to downstream signaling pathways. Involved in the activation of MAP

kinases. Modulates signaling via SHC1 by competing for a common binding site on NTRK1.

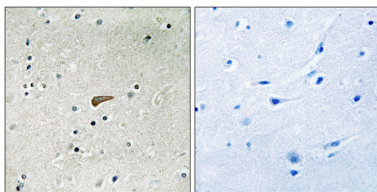
Research Area

Signal Transduction

Image Data



Western blot analysis of Phospho-FRS2 (Tyr436) in HUVEC lysates using Phospho-FRS2 (Tyr436) antibody.



Immunohistochemistry analysis of paraffin-embedded Human brain tissue using FRS2 (Phospho-Tyr436) antibody. High-pressure and temperature Sodium Citrate pH 6.0 was used for antigen retrieval. Sample with blocking peptide on the right.