

Product Name: Phospho-Connexin 43 (Ser368) Rabbit Polyclonal Antibody**Catalog #: APRab00920**

For research use only.

Summary

Description	Rabbit polyclonal Antibody
Host	Rabbit
Application	WB,IHC
Reactivity	Human,Mouse,Rat
Conjugation	Unconjugated
Modification	Phosphorylated
Isotype	IgG
Clonality	Polyclonal
Form	Liquid
Concentration	1mg/ml
Storage	Aliquot and store at -20°C (valid for 12 months). Avoid freeze/thaw cycles.
Shipping	Ice bags
Buffer	Liquid in PBS containing 50% glycerol, 0.5% protective protein and 0.02% sodium azide, pH 7.3.
Purification	Affinity Purification

Application

Dilution Ratio	WB 1:500-1:1000,IHC 1:50-1:100
Molecular Weight	Calculated MW: 43 kDa; Observed MW: 43 kDa

Antigen Information

Gene Name	GJA1
Alternative Names	Connexin 43; Connexin-43; Cx 43; Cx43; CXA1_HUMAN; DFNB38; Gap junction 43 kDa heart protein; Gap junction alpha-1 protein; Gap junction protein alpha 1 43kDa (connexin 43); Gap junction protein alpha 1 43kDa; Gap junction protein alpha like; GJA 1; Gja1; GJAL; ODD; ODDD; ODOD; SDTY3.
Gene ID	2697
SwissProt ID	P17302
Immunogen	A synthetic Phosphorylated peptide corresponding to residues target protein

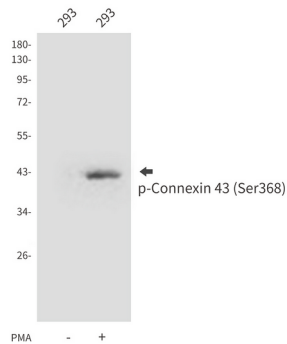
Background

Gap junction protein that acts as a regulator of bladder capacity.

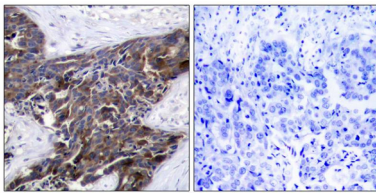
Research Area

Signal Transduction

Image Data



Western blot analysis of Phospho-Connexin 43 (Ser368) in 293 lysates using Phospho-Connexin 43 (Ser368) antibody.



Immunohistochemistry analysis of paraffin-embedded Human breast carcinoma tissue using Connexin 43 (Phospho-Ser368) antibody. High-pressure and temperature Sodium Citrate pH 6.0 was used for antigen retrieval. Sample with blocking peptide on the right.