

**Product Name: Phospho-Stathmin 1 (Ser25) Rabbit Polyclonal Antibody****Catalog #: APRab00919**

For research use only.

**Summary**

<b>Description</b>	Rabbit polyclonal Antibody
<b>Host</b>	Rabbit
<b>Application</b>	WB,IHC
<b>Reactivity</b>	Human,Mouse,Rat
<b>Conjugation</b>	Unconjugated
<b>Modification</b>	Phosphorylated
<b>Isotype</b>	IgG
<b>Clonality</b>	Polyclonal
<b>Form</b>	Liquid
<b>Concentration</b>	1mg/ml
<b>Storage</b>	Aliquot and store at -20°C (valid for 12 months). Avoid freeze/thaw cycles.
<b>Shipping</b>	Ice bags
<b>Buffer</b>	Liquid in PBS containing 50% glycerol, 0.5% protective protein and 0.02% sodium azide, pH 7.3.
<b>Purification</b>	Affinity Purification

**Application**

<b>Dilution Ratio</b>	WB 1:500-1:1000,IHC 1:50-1:100
<b>Molecular Weight</b>	Calculated MW: 17 kDa; Observed MW: 17 kDa

**Antigen Information**

<b>Gene Name</b>	STMN1
<b>Alternative Names</b>	STMN1; C1orf215; LAP18; OP18; Stathmin; Leukemia-associated phosphoprotein p18; Metablastin; Oncoprotein 18; Op18; Phosphoprotein p19; pp19; ProsoLin; Protein Pr22; pp17
<b>Gene ID</b>	3925
<b>SwissProt ID</b>	P16949
<b>Immunogen</b>	A synthetic Phosphorylated peptide corresponding to residues target protein

**Background**

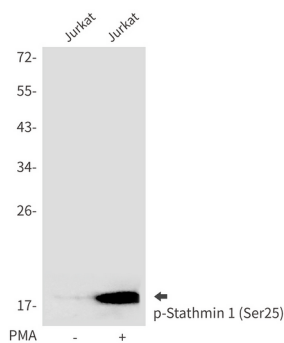
Involved in the regulation of the microtubule (MT) filament system by destabilizing microtubules. Prevents assembly and

promotes disassembly of microtubules. Phosphorylation at Ser-16 may be required for axon formation during neurogenesis. Involved in the control of the learned and innate fear.

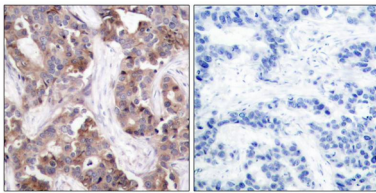
## Research Area

Neuroscience

## Image Data



Western blot analysis of Phospho-Stathmin 1 (Ser25) in Jurkat lysates using Phospho-Stathmin 1 (Ser25) antibody.



Immunohistochemistry analysis of paraffin-embedded Human breast carcinoma tissue using Stathmin 1(Phospho-Ser25) antibody. High-pressure and temperature Sodium Citrate pH 6.0 was used for antigen retrieval. Sample with blocking peptide on the right.