
Product Name: Phospho-NMDAR2A/2B (Tyr1246/Tyr1252) Rabbit Polyclonal Antibody
Catalog #: APRab00906

For research use only.

Summary

Description	Rabbit polyclonal Antibody
Host	Rabbit
Application	IHC, ICC/IF, ELISA
Reactivity	Human, Mouse, Rat
Conjugation	Unconjugated
Modification	Phosphorylated
Isotype	IgG
Clonality	Polyclonal
Form	Liquid
Concentration	1mg/ml
Storage	Aliquot and store at -20°C (valid for 12 months). Avoid freeze/thaw cycles.
Shipping	Ice bags
Buffer	Liquid in PBS containing 50% glycerol, 0.5% protective protein and 0.02% sodium azide, pH 7.3.
Purification	Affinity Purification

Application

Dilution Ratio	IHC 1:50-1:100, ICC/IF 1:50-1:200, ELISA 1:5000-1:20000
Molecular Weight	-

Antigen Information

Gene Name	GRIN2A/GRIN2B GRIN2A; NMDAR2A; Glutamate [NMDA] receptor subunit epsilon-1; N-methyl D-aspartate
Alternative Names	receptor subtype 2A; NMDAR2A; NR2A; hNR2A; GRIN2B; NMDAR2B; Glutamate [NMDA] receptor subunit epsilon-2; N-methyl D-aspartate receptor subtype 2B; NMDAR2B; N
Gene ID	2903/2904
SwissProt ID	Q12879/Q13224
Immunogen	The antiserum was produced against synthesized peptide derived from human NMDAR2A/B around the phosphorylation site of Tyr1246/1252. AA range:1216-1265

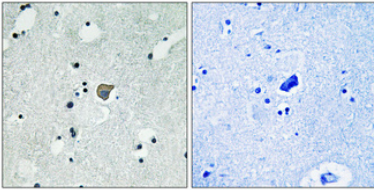
Background

NMDA receptor subtype of glutamate-gated ion channels possesses high calcium permeability and voltage-dependent sensitivity to magnesium. Activation requires binding of agonist to both types of subunits.

Research Area

Neuroscience

Image Data



Immunohistochemistry analysis of paraffin-embedded Human brain using Phospho-NMDAR2A/2B (Tyr1246/Tyr1252) antibody. High-pressure and temperature Tris-EDTA pH 8.0 was used for antigen retrieval. Sample with blocking peptide on the right.