

**Product Name: Phospho-CD31 (Tyr713) Rabbit Polyclonal Antibody****Catalog #: APRab00842**

For research use only.

**Summary**

<b>Description</b>	Rabbit polyclonal Antibody
<b>Host</b>	Rabbit
<b>Application</b>	WB,IHC,ICC/IF,ELISA
<b>Reactivity</b>	Human,Mouse
<b>Conjugation</b>	Unconjugated
<b>Modification</b>	Phosphorylated
<b>Isotype</b>	IgG
<b>Clonality</b>	Polyclonal
<b>Form</b>	Liquid
<b>Concentration</b>	1mg/ml
<b>Storage</b>	Aliquot and store at -20°C (valid for 12 months). Avoid freeze/thaw cycles.
<b>Shipping</b>	Ice bags
<b>Buffer</b>	Liquid in PBS containing 50% glycerol, 0.5% protective protein and 0.02% sodium azide, pH 7.3.
<b>Purification</b>	Affinity Chromatography

**Application**

<b>Dilution Ratio</b>	WB 1:500-1:1000,IHC 1:50-1:100,ICC/IF 1:50-1:200,ELISA 1:5000-1:20000
<b>Molecular Weight</b>	Calculated MW: 83 kDa; Observed MW: 150 kDa

**Antigen Information**

<b>Gene Name</b>	PECAM1
<b>Alternative Names</b>	Platelet endothelial cell adhesion molecule; PECAM-1; EndoCAM; GPIIA'; PECA1; CD antigen CD31
<b>Gene ID</b>	5175
<b>SwissProt ID</b>	P16284
<b>Immunogen</b>	The antiserum was produced against synthesized peptide derived from human PECAM-1 around the phosphorylation site of Tyr713. AA range:686-735

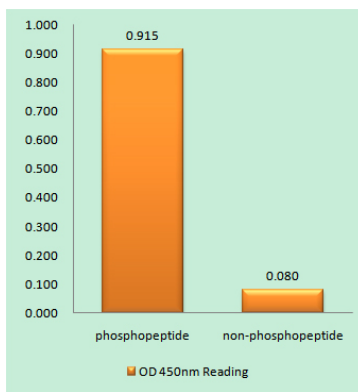
**Background**

PECAM-1 a cell adhesion molecule expressed on platelets and at endothelial cell intercellular junctions. Plays a role in modulation of integrin-mediated cell adhesion, transendothelial migration, angiogenesis, apoptosis, cell migration, negative regulation of immune cell signaling, autoimmunity, macrophage phagocytosis, IgE-mediated anaphylaxis and thrombosis. Undergoes alternative splicing, generating multiple isoforms in vascular beds of various tissues.

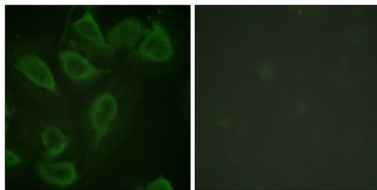
## Research Area

Cardiovascular

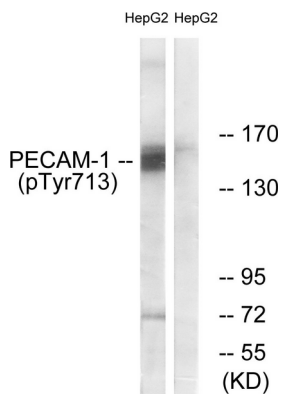
## Image Data



EnzymeLinked Immunosorbent Assay (Phospho-ELISA) for Immunogen Phospho-peptide (Phospho-left) and NonPhospho-peptide (Phospho-right), using PECAM1 (Phospho-Tyr71)antibody



Immunofluorescence analysis of Phospho-CD31 (Tyr713) in HeLa using Phospho-CD31 (Tyr713) antibody. The picture on the right is blocked with the Phospho-peptide.



Western blot analysis of Phospho-CD31 (Tyr713) in HepG2 lysates using Phospho-CD31 (Tyr713) antibody. The lane on the right is blocked with the Phospho-peptide.