
Product Name: Phospho-alpha 1 Sodium Potassium ATPase (Ser23) Rabbit Polyclonal Antibody**Catalog #: APRab00835**

For research use only.

Summary

Description	Rabbit polyclonal Antibody
Host	Rabbit
Application	WB,ICC/IF,ELISA
Reactivity	Rat
Conjugation	Unconjugated
Modification	Phosphorylated
Isotype	IgG
Clonality	Polyclonal
Form	Liquid
Concentration	1mg/ml
Storage	Aliquot and store at -20°C (valid for 12 months). Avoid freeze/thaw cycles.
Shipping	Ice bags
Buffer	Liquid in PBS containing 50% glycerol, 0.5% protective protein and 0.02% sodium azide, pH 7.3.
Purification	Affinity Chromatography

Application

Dilution Ratio	WB 1:500-1:1000,ICC/IF 1:50-1:200,ELISA 1:5000-1:20000
Molecular Weight	Calculated MW: 113 kDa; Observed MW: 113 kDa

Antigen Information

Gene Name	Atp1A1
Alternative Names	ATP1A1; Sodium/potassium-transporting ATPase subunit alpha-1; Na(+)/K(+) ATPase alpha-1 subunit; Sodium pump subunit alpha-1
Gene ID	24211.0
SwissProt ID	P06685
Immunogen	The antiserum was produced against synthesized peptide derived from rat ATP1 alpha1/Na+K+ ATPase1 around the phosphorylation site of Ser23. AA range:15-64

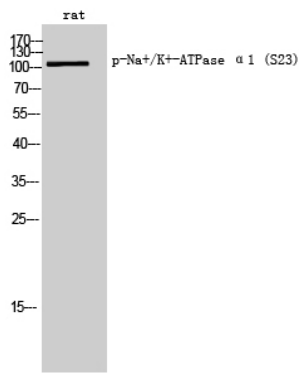
Background

The ATPase Na⁺/K⁺ transporting subunit alpha 1 encoded by ATP1A1 belongs to the family of P-type cation transport ATPases, and to the subfamily of Na⁺/K⁺ -ATPases. Na⁺/K⁺ -ATPase is an integral membrane protein responsible for establishing and maintaining the electrochemical gradients of Na and K ions across the plasma membrane.

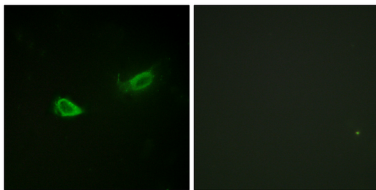
Research Area

Tags & Cell Markers

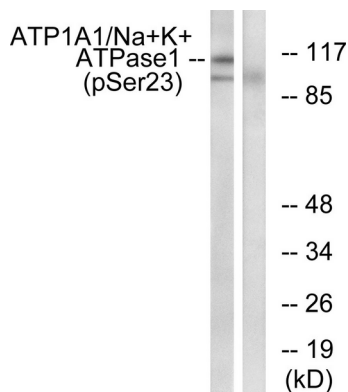
Image Data



Western blot analysis of Phospho-alpha 1 Sodium Potassium ATPase (Ser23) in rat lysates using Phospho-alpha 1 Sodium Potassium ATPase (Ser23) antibody.



Immunofluorescence analysis of Phospho-alpha 1 Sodium Potassium ATPase (Ser23) in NIH/3T3 using ATP1 alpha1/Na⁺K⁺ ATPase1 (Phospho-Ser23) antibody. The picture on the right is blocked using the Phospho-peptide.



Western blot analysis of Phospho-alpha 1 Sodium Potassium ATPase (Ser23) in rat brain lysates using ATP1 alpha1/Na⁺K⁺ ATPase1 (Phospho-Ser23) antibody. The lane on the right is blocked with the Phospho-peptide.