

---

**Product Name: Phospho-Sp1 (Thr739) Rabbit Polyclonal Antibody****Catalog #: APRab00833**

For research use only.

**Summary**

<b>Description</b>	Rabbit polyclonal Antibody
<b>Host</b>	Rabbit
<b>Application</b>	WB,IHC,ELISA
<b>Reactivity</b>	Human,Mouse,Rat,Monkey
<b>Conjugation</b>	Unconjugated
<b>Modification</b>	Phosphorylated
<b>Isotype</b>	IgG
<b>Clonality</b>	Polyclonal
<b>Form</b>	Liquid
<b>Concentration</b>	1mg/ml
<b>Storage</b>	Aliquot and store at -20°C (valid for 12 months). Avoid freeze/thaw cycles.
<b>Shipping</b>	Ice bags
<b>Buffer</b>	Liquid in PBS containing 50% glycerol, 0.5% protective protein and 0.02% sodium azide, pH 7.3.
<b>Purification</b>	Affinity Purification

**Application**

<b>Dilution Ratio</b>	WB 1:500-1:1000,IHC 1:50-1:100,ELISA 1:5000-1:20000
<b>Molecular Weight</b>	Calculated MW: 81 kDa; Observed MW: 81 kDa

**Antigen Information**

<b>Gene Name</b>	SP1
<b>Alternative Names</b>	SP1; TSFP1; Transcription factor Sp1
<b>Gene ID</b>	6667
<b>SwissProt ID</b>	P08047
<b>Immunogen</b>	The antiserum was produced against synthesized peptide derived from human SP1 around the phosphorylation site of Thr739. AA range:706-755

**Background**

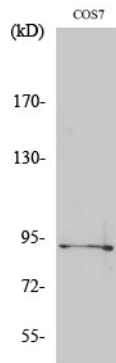
SP1 is a transcription factor of the Sp1 C2H2-type zinc-finger protein family. Phosphorylated and activated by MAPK.

Dephosphorylation by PTEN inhibits DNA binding. Binds to p38 in the nucleus.

## Research Area

Epigenetics and Nuclear Signaling

## Image Data



Western blot analysis of Phospho-Sp1 (Thr739) in COS7 lysates using Phospho-Sp1 (Thr739) antibody.