
Product Name: Phospho-ErbB 2 (Tyr1221/Tyr1222) Rabbit Polyclonal Antibody**Catalog #: APRab00832**

For research use only.

Summary

Description	Rabbit polyclonal Antibody
Host	Rabbit
Application	WB,IHC,ELISA,IP
Reactivity	Human,Mouse,Rat
Conjugation	Unconjugated
Modification	Phosphorylated
Isotype	IgG
Clonality	Polyclonal
Form	Liquid
Concentration	1mg/ml
Storage	Aliquot and store at -20°C (valid for 12 months). Avoid freeze/thaw cycles.
Shipping	Ice bags
Buffer	Liquid in PBS containing 50% glycerol, 0.5% protective protein and 0.02% sodium azide, pH 7.3.
Purification	Affinity Chromatography

Application

Dilution Ratio	WB 1:500-1:1000,IHC 1:50-1:100,ELISA 1:5000-1:20000,IP 1:20-1:50
Molecular Weight	Calculated MW: 138 kDa; Observed MW: 180 kDa

Antigen Information

Gene Name	ERBB2 ERBB2; HER2; MLN19; NEU; NGL; Receptor tyrosine-protein kinase erbB-2; Metastatic lymph
Alternative Names	node gene 19 protein; MLN 19; Proto-oncogene Neu; Proto-oncogene c-ErbB-2; Tyrosine kinase-type cell surface receptor HER2; p185erbB2; CD antigen CD340
Gene ID	2064
SwissProt ID	P04626
Immunogen	The antiserum was produced against synthesized peptide derived from human HER2 around the phosphorylation site of Tyr1221/Tyr1222. AA range:1191-1240

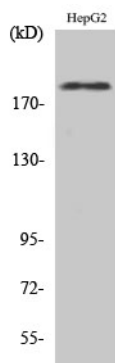
Background

This gene encodes a member of the epidermal growth factor (EGF) receptor family of receptor tyrosine kinases. This protein has no ligand binding domain of its own and therefore cannot bind growth factors. However, it does bind tightly to other ligand-bound EGF receptor family members to form a heterodimer, stabilizing ligand binding and enhancing kinase-mediated activation of downstream signalling pathways, such as those involving mitogen-activated protein kinase and phosphatidylinositol-3 kinase.

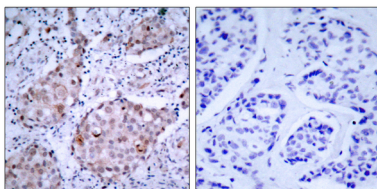
Research Area

Cancer

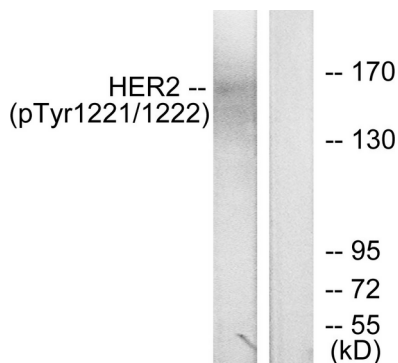
Image Data



Western blot analysis of Phospho-ErbB 2 (Tyr1221/Tyr1222) in various lysates using Phospho-ErbB 2 (Tyr1221/Tyr1222) antibody.



Immunohistochemistry analysis of paraffin-embedded Human breast carcinoma, using HER2 (Phospho-Tyr1221/Tyr122, 2) antibody. High-pressure and temperature Sodium Citrate pH 6.0 was used for antigen retrieval. Sample with blocking peptide on the right.



Western blot analysis of Phospho-ErbB 2 (Tyr1221/Tyr1222) in SKOV-3 lysates treated with EGF, using HER2 (Phospho-Tyr1221/Tyr122, 2) antibody. The lane on the right is blocked with the Phospho-peptide.