

Product Name: Phospho-IRS1 (Ser639) Rabbit Polyclonal Antibody**Catalog #: APRab00830**

For research use only.

Summary

Description	Rabbit polyclonal Antibody
Host	Rabbit
Application	WB,IHC,ELISA
Reactivity	Human,Mouse,Rat
Conjugation	Unconjugated
Modification	Phosphorylated
Isotype	IgG
Clonality	Polyclonal
Form	Liquid
Concentration	1mg/ml
Storage	Aliquot and store at -20°C (valid for 12 months). Avoid freeze/thaw cycles.
Shipping	Ice bags
Buffer	Liquid in PBS containing 50% glycerol, 0.5% protective protein and 0.02% sodium azide, pH 7.3.
Purification	Affinity Chromatography

Application

Dilution Ratio	WB 1:500-1:1000,IHC 1:50-1:100,ELISA 1:5000-1:20000
Molecular Weight	Calculated MW: 132 kDa; Observed MW: 150 kDa

Antigen Information

Gene Name	IRS1
Alternative Names	IRS1; Insulin receptor substrate 1; IRS-1
Gene ID	3667
SwissProt ID	P35568
Immunogen	The antiserum was produced against synthesized peptide derived from human IRS-1 around the phosphorylation site of Ser639. AA range:605-654

Background

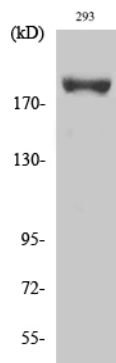
May mediate the control of various cellular processes by insulin. When phosphorylated by the insulin receptor binds specifically

to various cellular proteins containing SH2 domains such as phosphatidylinositol 3-kinase p85 subunit or GRB2. Activates phosphatidylinositol 3-kinase when bound to the regulatory p85 subunit .

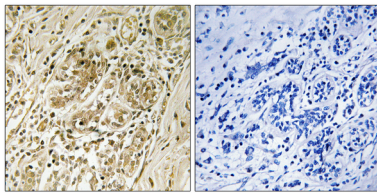
Research Area

Tags & Cell Markers

Image Data



Western blot analysis of Phospho-IRS1 (Ser639) in various lysates using Phospho-IRS1 (Ser639) antibody.



Immunohistochemistry analysis of paraffin-embedded Human breast carcinoma, using IRS1 (Phospho-Ser639) antibody. High-pressure and temperature Sodium Citrate pH 6.0 was used for antigen retrieval. Sample with blocking peptide on the right.