
Product Name: Phospho-Smad3 (Ser425) Rabbit Polyclonal Antibody**Catalog #: APRab00823**

For research use only.

Summary

Description	Rabbit polyclonal Antibody
Host	Rabbit
Application	WB,IHC,ICC/IF,ELISA
Reactivity	Human,Mouse,Rat
Conjugation	Unconjugated
Modification	Phosphorylated
Isotype	IgG
Clonality	Polyclonal
Form	Liquid
Concentration	1mg/ml
Storage	Aliquot and store at -20°C (valid for 12 months). Avoid freeze/thaw cycles.
Shipping	Ice bags
Buffer	Liquid in PBS containing 50% glycerol, 0.5% protective protein and 0.02% sodium azide, pH 7.3.
Purification	Affinity Purification

Application

Dilution Ratio	WB 1:500-1:1000,IHC 1:50-1:100,ICC/IF 1:50-1:200,ELISA 1:5000-1:20000
Molecular Weight	Calculated MW: 48 kDa; Observed MW: 58 kDa

Antigen Information

Gene Name	SMAD3 SMAD3; MADH3; Mothers against decapentaplegic homolog 3; MAD homolog 3; Mad3;
Alternative Names	Mothers against DPP homolog 3; hMAD-3; JV15-2; SMAD family member 3; SMAD 3; Smad3; hSMAD3
Gene ID	4088
SwissProt ID	P84022
Immunogen	The antiserum was produced against synthesized peptide derived from human Smad3 around the phosphorylation site of Ser425. AA range:376-425

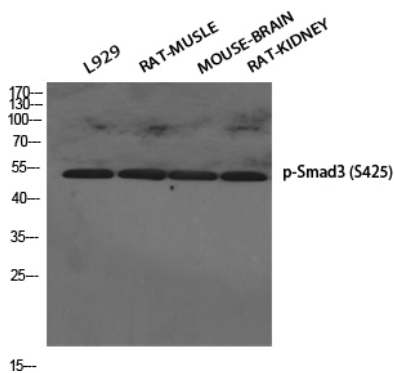
Background

Smad3 transcription factor phosphorylated and activated by TGF-beta-type receptors. A receptor-regulated Smad (R-smad). Binds directly to consensus DNA-binding elements in the promoters of target genes. In mouse required for establishment of the mucosal immune response and proper development of skeleton.

Research Area

Signal Transduction

Image Data



Western blot analysis of Phospho-Smad3 (Ser425) in various lysates using Phospho-Smad3 (Ser425) antibody.