
Product Name: C1RL Rabbit Polyclonal Antibody**Catalog #: APRab00809**

For research use only.

Summary

Description	Rabbit polyclonal Antibody
Host	Rabbit
Application	WB,ELISA
Reactivity	Human
Conjugation	Unconjugated
Modification	Unmodified
Isotype	IgG
Clonality	Polyclonal
Form	Liquid
Concentration	1mg/ml
Storage	Aliquot and store at -20°C (valid for 12 months). Avoid freeze/thaw cycles.
Shipping	Ice bags
Buffer	Liquid in PBS containing 50% glycerol, 0.5% protective protein and 0.02% sodium azide, pH 7.3.
Purification	Affinity Purification

Application

Dilution Ratio	WB 1:500-1:1000,ELISA 1:5000-1:20000
Molecular Weight	Calculated MW: 53 kDa; Observed MW: 53 kDa

Antigen Information

Gene Name	C1RL
Alternative Names	Complement C1r subcomponent-like protein (C1r-LP; C1r-like protein; EC 3.4.21.-; C1r-like serine protease analog protein; CLSPa)
Gene ID	51279
SwissProt ID	Q9NZP8
Immunogen	Synthesized peptide derived from human C1RL. at AA range: 371-420

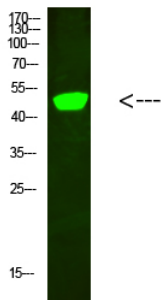
Background

Mediates the proteolytic cleavage of HP/haptoglobin in the endoplasmic reticulum.

Research Area

Immunology

Image Data



Western blot analysis of C1RL in hela lysates using C1RL antibody.