
Product Name: MAP4K2/3 Rabbit Polyclonal Antibody**Catalog #: APRab00806**

For research use only.

Summary

Description	Rabbit polyclonal Antibody
Host	Rabbit
Application	WB,ELISA
Reactivity	Human,Rat
Conjugation	Unconjugated
Modification	Unmodified
Isotype	IgG
Clonality	Polyclonal
Form	Liquid
Concentration	1mg/ml
Storage	Aliquot and store at -20°C (valid for 12 months). Avoid freeze/thaw cycles.
Shipping	Ice bags
Buffer	Liquid in PBS containing 50% glycerol, 0.5% protective protein and 0.02% sodium azide, pH 7.3.
Purification	Affinity Purification

Application

Dilution Ratio	WB 1:500-1:1000,ELISA 1:5000-1:20000
Molecular Weight	Calculated MW: 92 kDa; Observed MW: 100 kDa

Antigen Information

Gene Name	MAP4K2/MAP4K3 Mitogen-activated protein kinase kinase kinase kinase 2; B lymphocyte serine/threonine-protein kinase; Germinal center kinase; GC kinase; MAPK/ERK kinase kinase kinase 2; MEK kinase kinase 2; MEKKK 2; Rab8-interacting protein; Mitogen-activated protein kinase kinase kinase kinase 3; Germinal center kinase-related protein kinase; GLK; MAPK/ERK kinase kinase kinase 3; MEK kinase kinase 3; MEKKK 3
Alternative Names	
Gene ID	5871/8491
SwissProt ID	Q12851/Q8IVH8
Immunogen	Synthesized peptide derived from human GCK/GLK. at AA range: 221-270

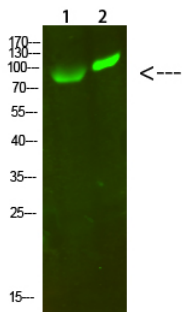
Background

Serine/threonine-protein kinase which acts as an essential component of the MAP kinase signal transduction pathway. Acts as a MAPK kinase kinase (MAP4K) and is an upstream activator of the stress-activated protein kinase/c-Jun N-terminal kinase (SAP/JNK) signaling pathway and to a lesser extent of the p38 MAPKs signaling pathway.

Research Area

Signal Transduction

Image Data



Western blot analysis of MAP4K2/3 in 293T, hela lysates using MAP4K2/3 antibody.