
Product Name: GCM2 Rabbit Polyclonal Antibody**Catalog #: APRab00805**

For research use only.

Summary

Description	Rabbit polyclonal Antibody
Host	Rabbit
Application	WB,ELISA
Reactivity	Human,Mouse,Rat
Conjugation	Unconjugated
Modification	Unmodified
Isotype	IgG
Clonality	Polyclonal
Form	Liquid
Concentration	1mg/ml
Storage	Aliquot and store at -20°C (valid for 12 months). Avoid freeze/thaw cycles.
Shipping	Ice bags
Buffer	Liquid in PBS containing 50% glycerol, 0.5% protective protein and 0.02% sodium azide, pH 7.3.
Purification	Affinity Purification

Application

Dilution Ratio	WB 1:500-1:1000,ELISA 1:5000-1:20000
Molecular Weight	Calculated MW: 57 kDa; Observed MW: 57 kDa

Antigen Information

Gene Name	GCM2
Alternative Names	Chorion-specific transcription factor GCMB (hGCMB; GCM motif protein 2; Glial cells missing homolog 2)
Gene ID	9247
SwissProt ID	O75603
Immunogen	Synthesized peptide derived from human GCM2. at AA range: 21-70

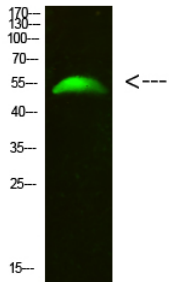
Background

Transcription factor that binds specific sequences on gene promoters and activate their transcription.

Research Area

Stem Cells

Image Data



Western blot analysis of GCM2 in 293T lysates using GCM2 antibody.