

---

**Product Name: Collagen VIII alpha 2 Rabbit Polyclonal Antibody****Catalog #: APRab00804**

For research use only.

**Summary**

<b>Description</b>	Rabbit polyclonal Antibody
<b>Host</b>	Rabbit
<b>Application</b>	WB,ELISA
<b>Reactivity</b>	Human,Mouse,Rat
<b>Conjugation</b>	Unconjugated
<b>Modification</b>	Unmodified
<b>Isotype</b>	IgG
<b>Clonality</b>	Polyclonal
<b>Form</b>	Liquid
<b>Concentration</b>	1mg/ml
<b>Storage</b>	Aliquot and store at -20°C (valid for 12 months). Avoid freeze/thaw cycles.
<b>Shipping</b>	Ice bags
<b>Buffer</b>	Liquid in PBS containing 50% glycerol, 0.5% protective protein and 0.02% sodium azide, pH 7.3.
<b>Purification</b>	Affinity Purification

**Application**

<b>Dilution Ratio</b>	WB 1:500-1:1000,ELISA 1:5000-1:20000
<b>Molecular Weight</b>	Calculated MW: 67 kDa; Observed MW: 80 kDa

**Antigen Information**

<b>Gene Name</b>	COL8A2
<b>Alternative Names</b>	Collagen alpha-2(VIII) chain (Endothelial collagen)
<b>Gene ID</b>	1296
<b>SwissProt ID</b>	P25067
<b>Immunogen</b>	Synthesized peptide derived from human COL8A2. at AA range: 611-660

**Background**

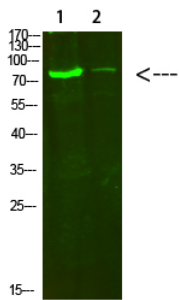
This gene encodes the alpha 2 chain of type VIII collagen. This protein is a major component of the basement membrane of the corneal endothelium and forms homo- or heterotrimers with alpha 1 (VIII) type collagens. Defects in this gene are associated

with Fuchs endothelial corneal dystrophy and posterior polymorphous corneal dystrophy type 2. Alternative splicing results in multiple transcript variants.

## Research Area

Cell Biology

## Image Data



Western blot analysis of Collagen VIII alpha 2 in HeLa, 3T3 lysates using Collagen VIII alpha 2 antibody.