

Product Name: Phospho-Smad2 (Ser250) Rabbit Polyclonal Antibody**Catalog #: APRab00704**

For research use only.

Summary

Description	Rabbit polyclonal Antibody
Host	Rabbit
Application	WB,FC
Reactivity	Human,Mouse,Rat
Conjugation	Unconjugated
Modification	Phosphorylated
Isotype	IgG
Clonality	Polyclonal
Form	Liquid
Concentration	1mg/ml
Storage	Aliquot and store at -20°C (valid for 12 months). Avoid freeze/thaw cycles.
Shipping	Ice bags
Buffer	Rabbit IgG in phosphate buffered saline , pH 7.4, 150mM NaCl, 0.02% sodium azide and 50% glycerol.
Purification	Affinity Chromatography

Application

Dilution Ratio	WB 1:500-1:1000,FC 1:50-1:100
Molecular Weight	Calculated MW: 52 kDa; Observed MW: 58 kDa

Antigen Information

Gene Name	SMAD2 SMAD2; MADH2; MADR2; Mothers against decapentaplegic homolog 2; MAD homolog 2;
Alternative Names	Mothers against DPP homolog 2; JV18-1; Mad-related protein 2; hMAD-2; SMAD family member 2; SMAD 2; Smad2; hSMAD2
Gene ID	4087
SwissProt ID	Q15796
Immunogen	A synthetic Phosphorylated peptide corresponding to residues target protein

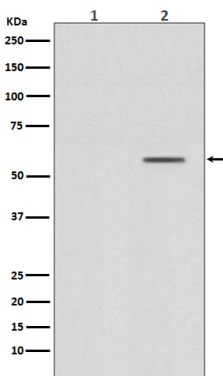
Background

The protein encoded by this gene belongs to the SMAD, a family of proteins similar to the gene products of the *Drosophila* gene 'mothers against decapentaplegic' (Mad) and the *C. elegans* gene Sma. SMAD proteins are signal transducers and transcriptional modulators that mediate multiple signaling pathways.

Research Area

Signal Transduction

Image Data



Western blot analysis of Phospho-Smad2 (S250) in (1) HeLa treated with alkaline phosphatase lysates; (2) HeLa lysates using Phospho-Smad2 (Ser250) antibody.