
Product Name: Phospho-CDK2 (Tyr15) Rabbit Polyclonal Antibody**Catalog #: APRab00700**

For research use only.

Summary

Description	Rabbit polyclonal Antibody
Host	Rabbit
Application	WB,IHC,IP
Reactivity	Human,Mouse,Rat
Conjugation	Unconjugated
Modification	Phosphorylated
Isotype	IgG
Clonality	Polyclonal
Form	Liquid
Concentration	1mg/ml
Storage	Aliquot and store at -20°C (valid for 12 months). Avoid freeze/thaw cycles.
Shipping	Ice bags
Buffer	Rabbit IgG in phosphate buffered saline , pH 7.4, 150mM NaCl, 0.02% sodium azide and 50% glycerol.
Purification	Affinity Chromatography

Application

Dilution Ratio	WB 1:500-1:1000,IHC 1:50-1:100,IP 1:20-1:50
Molecular Weight	Calculated MW: 34 kDa; Observed MW: 34 kDa

Antigen Information

Gene Name	CDK2
Alternative Names	CDK2; CDKN2; Cyclin-dependent kinase 2; Cell division protein kinase 2; p33 protein kinase
Gene ID	1017
SwissProt ID	P24941
Immunogen	A synthetic Phosphorylated peptide corresponding to residues target protein

Background

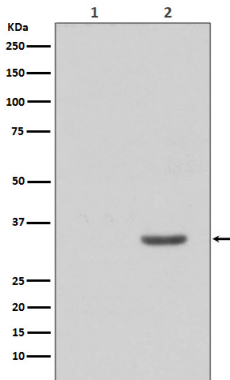
The protein encoded by this gene is a member of the Ser/Thr protein kinase family. This protein is a catalytic subunit of the highly conserved protein kinase complex known as M-phase promoting factor (MPF), which is essential for G1/S and G2/M

phase transitions of eukaryotic cell cycle.

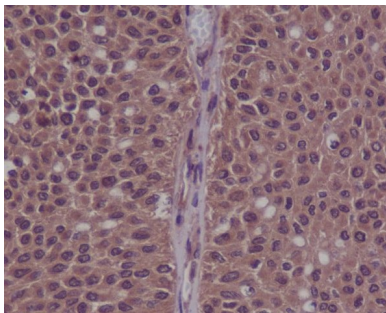
Research Area

Cell Biology

Image Data



Western blot analysis of Phospho-CDK2 (Y15) in (1) HeLa treated with AP; (2) HeLa lysates using Phospho-CDK2 (Tyr15) antibody.



Immunohistochemistry analysis of paraffin-embedded Human bladder cancer using Phospho-CDK2 (Y15) antibody. High-pressure and temperature Sodium Citrate pH 6.0 was used for antigen retrieval.