
Product Name: Phospho-STAT1 (Ser727) Rabbit Polyclonal Antibody**Catalog #: APRab00699**

For research use only.

Summary

Description	Rabbit polyclonal Antibody
Host	Rabbit
Application	WB,IHC
Reactivity	Human,Mouse,Rat
Conjugation	Unconjugated
Modification	Phosphorylated
Isotype	IgG
Clonality	Polyclonal
Form	Liquid
Concentration	1mg/ml
Storage	Aliquot and store at -20°C (valid for 12 months). Avoid freeze/thaw cycles.
Shipping	Ice bags
Buffer	Rabbit IgG in phosphate buffered saline , pH 7.4, 150mM NaCl, 0.02% sodium azide and 50% glycerol.
Purification	Affinity Chromatography

Application

Dilution Ratio	WB 1:500-1:1000,IHC 1:50-1:100
Molecular Weight	Calculated MW: 87 kDa; Observed MW: 87 kDa

Antigen Information

Gene Name	STAT1
Alternative Names	STAT1; Signal transducer and activator of transcription 1-alpha/beta; Transcription factor ISGF-3 components p91/p84
Gene ID	6772
SwissProt ID	P42224
Immunogen	A synthetic Phosphorylated peptide corresponding to residues target protein

Background

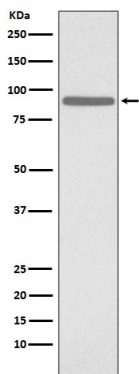
The protein encoded by this gene is a member of the STAT protein family. In response to cytokines and growth factors, STAT

family members are phosphorylated by the receptor associated kinases, and then form homo- or heterodimers that translocate to the cell nucleus where they act as transcription activators.

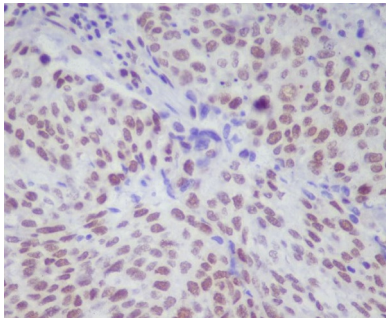
Research Area

Signal Transduction

Image Data



Western blot analysis of Phospho-STAT1 (S727) in HeLa lysates treated with etoposide using Phospho-STAT1 (Ser727) antibody.



Immunohistochemistry analysis of paraffin-embedded Human lung cancer using Phospho-STAT1 (S727) antibody. High-pressure and temperature Sodium Citrate pH 6.0 was used for antigen retrieval.