

---

**Product Name: Phospho-Synapsin I (Ser9) Rabbit Polyclonal Antibody****Catalog #: APRab00697**

For research use only.

**Summary**

<b>Description</b>	Rabbit polyclonal Antibody
<b>Host</b>	Rabbit
<b>Application</b>	WB,IHC
<b>Reactivity</b>	Human,Mouse,Rat
<b>Conjugation</b>	Unconjugated
<b>Modification</b>	Phosphorylated
<b>Isotype</b>	IgG
<b>Clonality</b>	Polyclonal
<b>Form</b>	Liquid
<b>Concentration</b>	1mg/ml
<b>Storage</b>	Aliquot and store at -20°C (valid for 12 months). Avoid freeze/thaw cycles.
<b>Shipping</b>	Ice bags
<b>Buffer</b>	Rabbit IgG in phosphate buffered saline , pH 7.4, 150mM NaCl, 0.02% sodium azide and 50% glycerol.
<b>Purification</b>	Affinity Chromatography

**Application**

<b>Dilution Ratio</b>	WB 1:500-1:1000,IHC 1:50-1:100
<b>Molecular Weight</b>	Calculated MW: 74 kDa; Observed MW: 77 kDa

**Antigen Information**

<b>Gene Name</b>	SYN1
<b>Alternative Names</b>	SYN1; Synapsin-1; Brain protein 4.1; Synapsin I
<b>Gene ID</b>	6853
<b>SwissProt ID</b>	P17600
<b>Immunogen</b>	A synthetic Phosphorylated peptide corresponding to residues target protein

**Background**

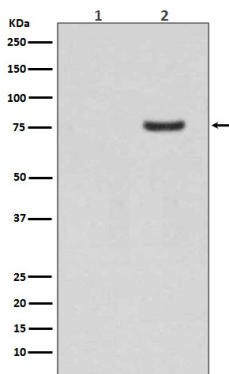
This gene is a member of the synapsin gene family. Synapsins encode neuronal phosphoproteins which associate with the cytoplasmic surface of synaptic vesicles. Family members are characterized by common protein domains, and they are

implicated in synaptogenesis and the modulation of neurotransmitter release, suggesting a potential role in several neuropsychiatric diseases.

## Research Area

Neuroscience

## Image Data



Western blot analysis of Phospho-Synapsin I (S9) in (1) Human brain lysates; (2) Human brain lysates treated with AP using Phospho-Synapsin I (Ser9) antibody.