
Product Name: Phospho-IKB alpha (Ser32) Rabbit Polyclonal Antibody**Catalog #: APRab00694**

For research use only.

Summary

Description	Rabbit polyclonal Antibody
Host	Rabbit
Application	WB,IP
Reactivity	Human
Conjugation	Unconjugated
Modification	Phosphorylated
Isotype	IgG
Clonality	Polyclonal
Form	Liquid
Concentration	1mg/ml
Storage	Aliquot and store at -20°C (valid for 12 months). Avoid freeze/thaw cycles.
Shipping	Ice bags
Buffer	Rabbit IgG in phosphate buffered saline , pH 7.4, 150mM NaCl, 0.02% sodium azide and 50% glycerol.
Purification	Affinity Chromatography

Application

Dilution Ratio	WB 1:500-1:1000,IP 1:20-1:50
Molecular Weight	Calculated MW: 36 kDa; Observed MW: 39 kDa

Antigen Information

Gene Name	NFKBIA
Alternative Names	NFKBIA; IKBA; MAD3; NFKBI; NF-kappa-B inhibitor alpha; I-kappa-B-alpha; Ikb-alpha; I kappa B alpha; Major histocompatibility complex enhancer-binding protein MAD3
Gene ID	4792
SwissProt ID	P25963
Immunogen	A synthetic Phosphorylated peptide corresponding to residues target protein

Background

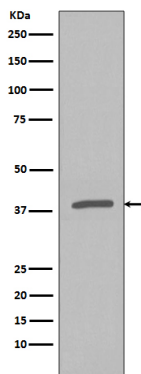
NFKB1 (MIM 164011) or NFKB2 (MIM 164012) is bound to REL (MIM 164910), RELA (MIM 164014), or RELB (MIM 604758) to

form the NF κ B complex. The NF κ B complex is inhibited by I-kappa-B proteins (NF κ BIA or NF κ BIB, MIM 604495), which inactivate NF-kappa-B by trapping it in the cytoplasm.

Research Area

Epigenetics and Nuclear Signaling

Image Data



Western blot analysis of Phospho-IKB alpha (S32) in HeLa lysates treated with Calyculin A and TNF α using Phospho-IKB alpha (Ser32) antibody.