

Product Name: MonoMethyl-Histone H3 (Lys18) Rabbit Polyclonal Antibody**Catalog #: APRab00690**

For research use only.

Summary

Description	Rabbit polyclonal Antibody
Host	Rabbit
Application	WB,IHC,ICC/IF
Reactivity	Human,Mouse,Rat
Conjugation	Unconjugated
Modification	Methylated
Isotype	IgG
Clonality	Polyclonal
Form	Liquid
Concentration	1mg/ml
Storage	Aliquot and store at -20°C (valid for 12 months). Avoid freeze/thaw cycles.
Shipping	Ice bags
Buffer	Rabbit IgG in phosphate buffered saline , pH 7.4, 150mM NaCl, 0.02% sodium azide and 50% glycerol.
Purification	Affinity Chromatography

Application

Dilution Ratio	WB 1:500-1:1000,IHC 1:50-1:100,ICC/IF 1:50-1:200
Molecular Weight	Calculated MW: 15 kDa; Observed MW: 15 kDa

Antigen Information

Gene Name	H3C1
Alternative Names	H3K18me; H3/j; H3C1; H3C2; H3C3; H3C4; H3C6; H3C7; H3C8; H3FJ; H3C10; H3C11; HIST1H3J
Gene ID	8350
SwissProt ID	P68431
Immunogen	A synthetic Methylated peptide corresponding to residues target protein

Background

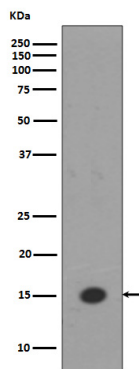
H3 Core component of nucleosome. Nucleosomes wrap and compact DNA into chromatin, limiting DNA accessibility to the

cellular machineries which require DNA as a template. Histones thereby play a central role in transcription regulation, DNA repair, DNA replication and chromosomal stability.

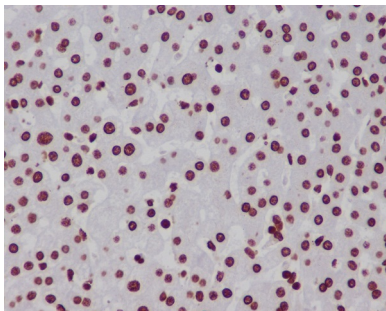
Research Area

Epigenetics and Nuclear Signaling

Image Data



Western blot analysis of Histone H3 (mono methyl K18) in HeLa lysates using MonoMethyl-Histone H3 (Lys18) antibody.



Immunohistochemistry analysis of paraffin-embedded Human liver using Histone H3 (mono methyl K18) antibody. High-pressure and temperature Sodium Citrate pH 6.0 was used for antigen retrieval.