
Product Name: Phospho-Src (Tyr419) Rabbit Polyclonal Antibody**Catalog #: APRab00684**

For research use only.

Summary

Description	Rabbit polyclonal Antibody
Host	Rabbit
Application	WB,FC
Reactivity	Human,Mouse,Rat
Conjugation	Unconjugated
Modification	Phosphorylated
Isotype	IgG
Clonality	Polyclonal
Form	Liquid
Concentration	1mg/ml
Storage	Aliquot and store at -20°C (valid for 12 months). Avoid freeze/thaw cycles.
Shipping	Ice bags
Buffer	Rabbit IgG in phosphate buffered saline , pH 7.4, 150mM NaCl, 0.02% sodium azide and 50% glycerol.
Purification	Affinity Chromatography

Application

Dilution Ratio	WB 1:500-1:1000,FC 1:50-1:100
Molecular Weight	Calculated MW: 60 kDa; Observed MW: 60 kDa

Antigen Information

Gene Name	SRC
Alternative Names	SRC; SRC1; Proto-oncogene tyrosine-protein kinase Src; Proto-oncogene c-Src; pp60c-src; p60-Src
Gene ID	6714
SwissProt ID	P12931
Immunogen	A synthetic Phosphorylated peptide corresponding to residues target protein

Background

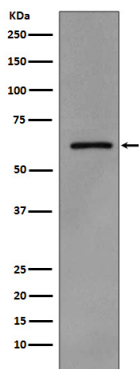
Src activity is regulated by tyrosine phosphorylation at two sites, but with opposing effects. While phosphorylation at Tyr416 in

the activation loop of the kinase domain upregulates enzyme activity, phosphorylation at Tyr527 in the carboxy-terminal tail by Csk renders the enzyme less active (2).

Research Area

Signal Transduction

Image Data



Western blot analysis of Phospho-Src (Y419) in A431 lysates treated with pervanadate using Phospho-Src (Tyr419) antibody.