
Product Name: Phospho-CREB (Ser133) Rabbit Polyclonal Antibody**Catalog #: APRab00672**

For research use only.

Summary

Description	Rabbit polyclonal Antibody
Host	Rabbit
Application	WB,IHC,ICC/IF,FC,IP
Reactivity	Human,Mouse,Rat
Conjugation	Unconjugated
Modification	Phosphorylated
Isotype	IgG
Clonality	Polyclonal
Form	Liquid
Concentration	1mg/ml
Storage	Aliquot and store at -20°C (valid for 12 months). Avoid freeze/thaw cycles.
Shipping	Ice bags
Buffer	Rabbit IgG in phosphate buffered saline , pH 7.4, 150mM NaCl, 0.02% sodium azide and 50% glycerol.
Purification	Affinity Chromatography

Application

Dilution Ratio	WB 1:500-1:1000,IHC 1:50-1:100,ICC/IF 1:50-1:200,FC 1:50-1:100,IP 1:20-1:50
Molecular Weight	Calculated MW: 35 kDa; Observed MW: 46 kDa

Antigen Information

Gene Name	CREB1
Alternative Names	CREB1; Cyclic AMP-responsive element-binding protein 1; CREB-1; cAMP-responsive element-binding protein 1
Gene ID	1385
SwissProt ID	P16220
Immunogen	A synthetic Phosphorylated peptide corresponding to residues target protein

Background

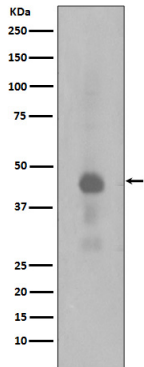
This gene encodes a transcription factor that is a member of the leucine zipper family of DNA binding proteins. This protein

binds as a homodimer to the cAMP-responsive element, an octameric palindrome.

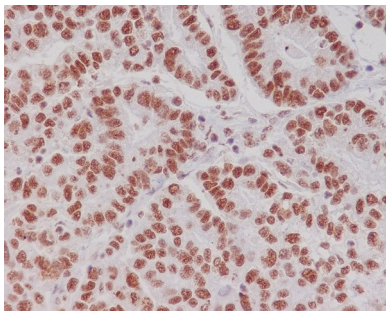
Research Area

Epigenetics and Nuclear Signaling

Image Data



Western blot analysis of Phospho-Creb(Ser133) in HeLa lysates treated with Calyculin A using Phospho-CREB (Ser133) antibody.



Immunohistochemistry analysis of paraffin-embedded Human gastric carcinoma using Phospho-Creb (S133) antibody. High-pressure and temperature Sodium Citrate pH 6.0 was used for antigen retrieval.