
Product Name: GRO gamma Rabbit Polyclonal Antibody**Catalog #: APRab00655**

For research use only.

Summary

Description	Rabbit polyclonal Antibody
Host	Rabbit
Application	IHC,ELISA
Reactivity	Human
Conjugation	Unconjugated
Modification	Unmodified
Isotype	IgG
Clonality	Polyclonal
Form	Liquid
Concentration	1mg/ml
Storage	Aliquot and store at -20°C (valid for 12 months). Avoid freeze/thaw cycles.
Shipping	Ice bags
Buffer	Liquid in PBS containing 50% glycerol, 0.5% protective protein and 0.02% sodium azide, pH 7.3.
Purification	Affinity Purification

Application

Dilution Ratio	IHC 1:50-1:100,ELISA 1:5000-1:20000
Molecular Weight	-

Antigen Information

Gene Name	CXCL3
Alternative Names	CXCL3; GRO3; GROG; SCYB3; C-X-C motif chemokine 3; GRO-gamma(1-73); Growth-regulated protein gamma; GRO-gamma; Macrophage inflammatory protein 2-beta; MIP2-beta
Gene ID	2921
SwissProt ID	P19876
Immunogen	

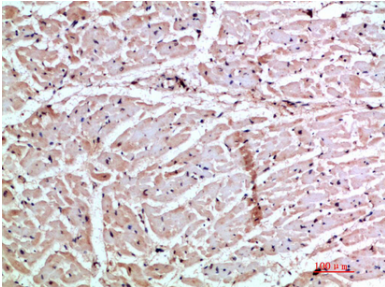
Background

Chemokine (C-X-C motif) ligand 3 (CXCL3) is a small cytokine belonging to the CXC chemokine family that is also known as GRO3 oncogene (GRO3), GRO protein gamma (GROg) and macrophage inflammatory protein-2-beta (MIP2b). CXCL3 controls migration and adhesion of monocytes and mediates its effects on its target cell by interacting with a cell surface chemokine receptor called CXCR2. More recently, it has been shown that Cxcl3 regulates cell autonomously the migration of the precursors of cerebellar granule neurons toward the internal layers of cerebellum, during the morphogenesis of cerebellum.

Research Area

Cardiovascular

Image Data



Immunohistochemistry analysis of paraffin-embedded Human heart using GRO gamma antibody. High-pressure and temperature Sodium Citrate pH 6.0 was used for antigen retrieval.