

Product Name: Cytokeratin Rabbit Polyclonal Antibody**Catalog #: APRab00651**

For research use only.

Summary

Description	Rabbit polyclonal Antibody
Host	Rabbit
Application	WB,ELISA
Reactivity	Human,Mouse,Rat
Conjugation	Unconjugated
Modification	Unmodified
Isotype	IgG
Clonality	Polyclonal
Form	Liquid
Concentration	1mg/ml
Storage	Aliquot and store at -20°C (valid for 12 months). Avoid freeze/thaw cycles.
Shipping	Ice bags
Buffer	Liquid in PBS containing 50% glycerol, 0.5% protective protein and 0.02% sodium azide, pH 7.3.
Purification	Affinity Purification

Application

Dilution Ratio	WB 1:500-1:1000,ELISA 1:5000-1:20000
Molecular Weight	Calculated MW: 65 kDa; Observed MW: 70 kDa

Antigen Information

Gene Name	Keratin KRT2A; KRT2E; KRT2B; KRT2P; K6A; KRT6D; K6B; KRTL1; KRT6E; K6IRS1; KB34; KRT6IRS1;
Alternative Names	K6IRS2; KB35; KRT6; KRT6IRS2; K6IRS3; KB36; KRT6IRS3; K6IRS4; KB37; KRT5C; KRT6IRS4; K6HF; KB18; K6L; KB38; KRT6L; SCL; CYK8; KRTHB4
Gene ID	3849.0
SwissProt ID	P35908/Q01546/P12035/P13647/P02538/P04259/P48668/Q3SY84/Q14CN4/Q86Y46/ Q7RTS7/O95678/Q5XKE5/P08729/P05787/Q9NSB2
Immunogen	Synthetic peptide from human protein at AA range: 150-220

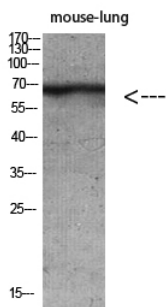
Background

Probably contributes to terminal cornification. Associated with keratinocyte activation, proliferation and keratinization.

Research Area

Signal Transduction

Image Data



Western blot analysis of Cytokeratin in mouse lung, mouse brain, mouse kidney, mouse heart lysates using Cytokeratin antibody.