
Product Name: Plasminogen Receptor Rabbit Polyclonal Antibody**Catalog #: APRab00646**

For research use only.

Summary

| | |
|----------------------|--|
| Description | Rabbit polyclonal Antibody |
| Host | Rabbit |
| Application | WB,ELISA |
| Reactivity | Human,Rat |
| Conjugation | Unconjugated |
| Modification | Unmodified |
| Isotype | IgG |
| Clonality | Polyclonal |
| Form | Liquid |
| Concentration | 1mg/ml |
| Storage | Aliquot and store at -20°C (valid for 12 months). Avoid freeze/thaw cycles. |
| Shipping | Ice bags |
| Buffer | Liquid in PBS containing 50% glycerol, 0.5% protective protein and 0.02% sodium azide, pH 7.3. |
| Purification | Affinity Purification |

Application

| | |
|-------------------------|--|
| Dilution Ratio | WB 1:500-1:1000,ELISA 1:5000-1:20000 |
| Molecular Weight | Calculated MW: 17 kDa; Observed MW: 17 kDa |

Antigen Information

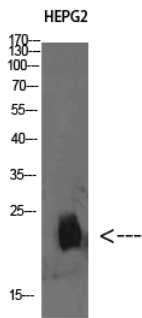
| | |
|--------------------------|--|
| Gene Name | PLGRKT |
| Alternative Names | Plasminogen receptor (KT; Plg-R(KT)) |
| Gene ID | 55848 |
| SwissProt ID | Q9HBL7 |
| Immunogen | The antiserum was produced against synthesized peptide derived from the Internal region of human PLGRKT. AA range:1-50 |

Background

Receptor for plasminogen.

Research Area

Image Data



Western blot analysis of Plasminogen Receptor in HEPG2 lysates using Plasminogen Receptor antibody.