

**Product Name: IL-22 Rabbit Polyclonal Antibody****Catalog #: APRab00642**

For research use only.

**Summary**

<b>Description</b>	Rabbit polyclonal Antibody
<b>Host</b>	Rabbit
<b>Application</b>	WB,ELISA
<b>Reactivity</b>	Human,Mouse,Rat
<b>Conjugation</b>	Unconjugated
<b>Modification</b>	Unmodified
<b>Isotype</b>	IgG
<b>Clonality</b>	Polyclonal
<b>Form</b>	Liquid
<b>Concentration</b>	1mg/ml
<b>Storage</b>	Aliquot and store at -20°C (valid for 12 months). Avoid freeze/thaw cycles.
<b>Shipping</b>	Ice bags
<b>Buffer</b>	Liquid in PBS containing 50% glycerol, 0.5% protective protein and 0.02% sodium azide, pH 7.3.
<b>Purification</b>	Affinity Purification

**Application**

<b>Dilution Ratio</b>	WB 1:500-1:1000,ELISA 1:5000-1:20000
<b>Molecular Weight</b>	Calculated MW: 20 kDa; Observed MW: 20 kDa

**Antigen Information**

<b>Gene Name</b>	IL22
<b>Alternative Names</b>	IL-22; IL22; ILTIF; ZCYTO18; Interleukin-22; IL-22; Cytokine Zcyto18; IL-10-related T-cell-derived-inducible factor; IL-TIF
<b>Gene ID</b>	50616
<b>SwissProt ID</b>	Q9GZX6
<b>Immunogen</b>	The antiserum was produced against synthesized peptide derived from the C-terminal region of human IL22. AA range:121-170

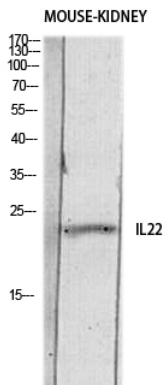
**Background**

Cytokine that contributes to the inflammatory response in vivo.

## Research Area

Immunology

## Image Data



Western blot analysis of IL-22 in mouse KIDNEY lysates using IL-22 antibody.