

Product Name: RASSF8 Rabbit Polyclonal Antibody**Catalog #: APRab00604**

For research use only.

Summary

Description	Rabbit polyclonal Antibody
Host	Rabbit
Application	WB,ELISA
Reactivity	Human,Rat
Conjugation	Unconjugated
Modification	Unmodified
Isotype	IgG
Clonality	Polyclonal
Form	Liquid
Concentration	1mg/ml
Storage	Aliquot and store at -20°C (valid for 12 months). Avoid freeze/thaw cycles.
Shipping	Ice bags
Buffer	Liquid in PBS containing 50% glycerol, 0.5% protective protein and 0.02% sodium azide, pH 7.3.
Purification	Affinity Purification

Application

Dilution Ratio	WB 1:500-1:1000,ELISA 1:5000-1:20000
Molecular Weight	Calculated MW: 48 kDa; Observed MW: 48 kDa

Antigen Information

Gene Name	RASSF8
Alternative Names	RASSF8; C12orf2; Ras association domain-containing protein 8; Carcinoma-associated protein HOJ-1
Gene ID	11228
SwissProt ID	Q8NHQ8
Immunogen	Synthesized peptide derived from RASSF8 . at AA range: 60-140

Background

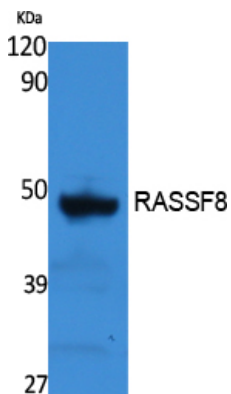
This gene encodes a member of the Ras-association domain family (RASSF) of tumor suppressor proteins. This gene is essential

for maintaining adherens junction function in epithelial cells and has a role in epithelial cell migration. It is a lung tumor suppressor gene candidate.

Research Area

Signal Transduction

Image Data



Western blot analysis of RASSF8 in rat stomach lysates using RASSF8 antibody.