

**Product Name: Cytochrome P450 2A6/7/13 Rabbit Polyclonal Antibody****Catalog #: APRab00602**

For research use only.

**Summary**

<b>Description</b>	Rabbit polyclonal Antibody
<b>Host</b>	Rabbit
<b>Application</b>	WB,ELISA
<b>Reactivity</b>	Human
<b>Conjugation</b>	Unconjugated
<b>Modification</b>	Unmodified
<b>Isotype</b>	IgG
<b>Clonality</b>	Polyclonal
<b>Form</b>	Liquid
<b>Concentration</b>	1mg/ml
<b>Storage</b>	Aliquot and store at -20°C (valid for 12 months). Avoid freeze/thaw cycles.
<b>Shipping</b>	Ice bags
<b>Buffer</b>	Liquid in PBS containing 50% glycerol, 0.5% protective protein and 0.02% sodium azide, pH 7.3.
<b>Purification</b>	Affinity Purification

**Application**

<b>Dilution Ratio</b>	WB 1:500-1:1000,ELISA 1:5000-1:20000
<b>Molecular Weight</b>	Calculated MW: 56 kDa; Observed MW: 56 kDa

**Antigen Information**

<b>Gene Name</b>	CYP2A6/CYP2A7/CYP2A13 CYP2A6; CYP2A3; Cytochrome P450 2A6; 1; 4-cineole 2-exo-monooxygenase; CYP11A6;
<b>Alternative Names</b>	Coumarin 7-hydroxylase; Cytochrome P450 IIA3; Cytochrome P450(I); CYP2A7; Cytochrome P450 2A7; CYP11A7; Cytochrome P450 IIA4; CYP2A13; Cytochrome P450 2A13; CYP11A13
<b>Gene ID</b>	1548/1549/1553
<b>SwissProt ID</b>	P11509/P20853/Q16696
<b>Immunogen</b>	Synthesized peptide derived from the Internal region of human CYP2A6/7/13.

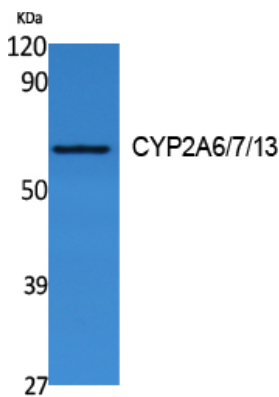
**Background**

Exhibits a high coumarin 7-hydroxylase activity. Can act in the hydroxylation of the anti-cancer drugs cyclophosphamide and ifosphamide. Competent in the metabolic activation of aflatoxin B1. Constitutes the major nicotine C-oxidase. Acts as a 1,4-cineole 2-exo-monooxygenase. Possesses low phenacetin O-deethylation activity.

## Research Area

Cardiovascular

## Image Data



Western blot analysis of Cytochrome P450 2A6/7/13 in Jurkat lysates using CYP2A6/7/13 antibody.