

**Product Name: ApoL6 Rabbit Polyclonal Antibody****Catalog #: APRab00600**

For research use only.

**Summary**

<b>Description</b>	Rabbit polyclonal Antibody
<b>Host</b>	Rabbit
<b>Application</b>	WB,ELISA
<b>Reactivity</b>	Human
<b>Conjugation</b>	Unconjugated
<b>Modification</b>	Unmodified
<b>Isotype</b>	IgG
<b>Clonality</b>	Polyclonal
<b>Form</b>	Liquid
<b>Concentration</b>	1mg/ml
<b>Storage</b>	Aliquot and store at -20°C (valid for 12 months). Avoid freeze/thaw cycles.
<b>Shipping</b>	Ice bags
<b>Buffer</b>	Liquid in PBS containing 50% glycerol, 0.5% protective protein and 0.02% sodium azide, pH 7.3.
<b>Purification</b>	Affinity Purification

**Application**

<b>Dilution Ratio</b>	WB 1:500-1:1000,ELISA 1:5000-1:20000
<b>Molecular Weight</b>	Calculated MW: 38 kDa; Observed MW: 38 kDa

**Antigen Information**

<b>Gene Name</b>	APOL6
<b>Alternative Names</b>	APOL6; Apolipoprotein L6; Apolipoprotein L-VI; ApoL-VI
<b>Gene ID</b>	80830
<b>SwissProt ID</b>	Q9BWW8
<b>Immunogen</b>	Synthesized peptide derived from ApoL6 . at AA range: 240-320

**Background**

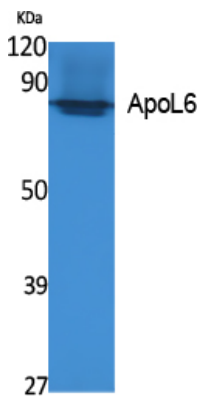
This gene is a member of the apolipoprotein L gene family. The encoded protein is found in the cytoplasm, where it may affect the movement of lipids or allow the binding of lipids to organelles. Widely expressed; highly expressed in the uterus, fetal brain

and spinal cord, also detected in heart, liver, lung, colon, spleen, thymus, prostate, placenta, adrenal gland, salivary and mammary gland.

## Research Area

Cell Biology

## Image Data



Western blot analysis of ApoL6 in K562 lysates using ApoL6 antibody.