

---

**Product Name: Phospho-TAK1 (Thr187) Rabbit Polyclonal Antibody****Catalog #: APRab00589**

For research use only.

**Summary**

<b>Description</b>	Rabbit polyclonal Antibody
<b>Host</b>	Rabbit
<b>Application</b>	WB,IHC,ELISA
<b>Reactivity</b>	Human,Mouse,Rat
<b>Conjugation</b>	Unconjugated
<b>Modification</b>	Phosphorylated
<b>Isotype</b>	IgG
<b>Clonality</b>	Polyclonal
<b>Form</b>	Liquid
<b>Concentration</b>	1mg/ml
<b>Storage</b>	Aliquot and store at -20°C (valid for 12 months). Avoid freeze/thaw cycles.
<b>Shipping</b>	Ice bags
<b>Buffer</b>	Liquid in PBS containing 50% glycerol, 0.5% protective protein and 0.02% sodium azide, pH 7.3.
<b>Purification</b>	Affinity Purification

**Application**

<b>Dilution Ratio</b>	WB 1:500-1:1000,IHC 1:50-1:100,ELISA 1:5000-1:20000
<b>Molecular Weight</b>	Calculated MW: 67 kDa; Observed MW: 60 kDa

**Antigen Information**

<b>Gene Name</b>	MAP3K7
<b>Alternative Names</b>	MAP3K7; TAK1; Mitogen-activated protein kinase kinase kinase 7; Transforming growth factor-beta-activated kinase 1; TGF-beta-activated kinase 1
<b>Gene ID</b>	6885
<b>SwissProt ID</b>	O43318
<b>Immunogen</b>	The antiserum was produced against synthesized peptide derived from human MAP3K7 around the phosphorylation site of Thr187. AA range:161-210

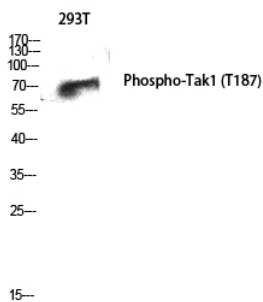
**Background**

Component of a protein kinase signal transduction cascade. Mediator of TRAF6 and TGF-beta signal transduction. Activates IKBKB and MAPK8 in response to TRAF6 signaling. Stimulates NF-kappa-B activation and the p38 MAPK pathway. In osmotic stress signaling, plays a major role in the activation of MAPK8/JNK, but not that of NF-kappa-B.

## Research Area

Signal Transduction

## Image Data



Western blot analysis of Phospho-TAK1 (Thr187) in 293T lysates using Phospho-TAK1 (Thr187) antibody.