

Product Name: CD42c Rabbit Polyclonal Antibody**Catalog #: APRab00586**

For research use only.

Summary

Description	Rabbit polyclonal Antibody
Host	Rabbit
Application	IHC, ELISA
Reactivity	Human, Mouse, Rat
Conjugation	Unconjugated
Modification	Unmodified
Isotype	IgG
Clonality	Polyclonal
Form	Liquid
Concentration	1mg/ml
Storage	Aliquot and store at -20°C (valid for 12 months). Avoid freeze/thaw cycles.
Shipping	Ice bags
Buffer	Liquid in PBS containing 50% glycerol, 0.5% protective protein and 0.02% sodium azide, pH 7.3.
Purification	Affinity Purification

Application

Dilution Ratio	IHC 1:50-1:100, ELISA 1:5000-1:20000
Molecular Weight	-

Antigen Information

Gene Name	GP1BB
Alternative Names	Platelet glycoprotein Ib beta chain (GP-Ib beta; GPIb-beta; GPIbB; Antigen CD42b-beta; CD antigen CD42c)
Gene ID	2812
SwissProt ID	P13224
Immunogen	Synthetic peptide from human protein at AA range: 90-150

Background

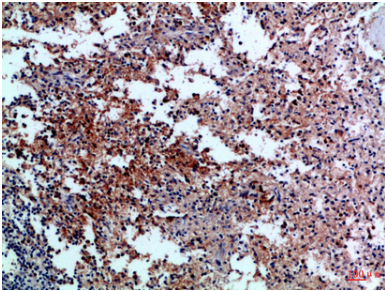
Gp-Ib, a surface membrane protein of platelets, participates in the formation of platelet plugs by binding to von Willebrand

factor, which is already bound to the subendothelium.

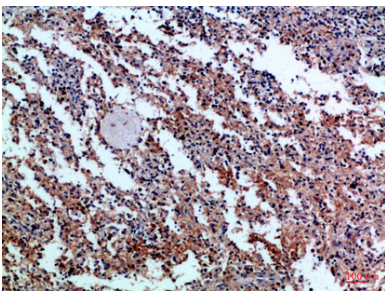
Research Area

Immunology

Image Data



Immunohistochemistry analysis of paraffin-embedded Human spleen using CD42c antibody. High-pressure and temperature Sodium Citrate pH 6.0 was used for antigen retrieval.



Immunohistochemical analysis of paraffin-embedded Human tonsils using CD42c antibody. High-pressure and temperature Sodium Citrate pH 6.0 was used for antigen retrieval.