
Product Name: MRPL35 Rabbit Polyclonal Antibody**Catalog #: APRab00574**

For research use only.

Summary

Description	Rabbit polyclonal Antibody
Host	Rabbit
Application	WB,ELISA
Reactivity	Human,Mouse
Conjugation	Unconjugated
Modification	Unmodified
Isotype	IgG
Clonality	Polyclonal
Form	Liquid
Concentration	1mg/ml
Storage	Aliquot and store at -20°C (valid for 12 months). Avoid freeze/thaw cycles.
Shipping	Ice bags
Buffer	Liquid in PBS containing 50% glycerol, 0.5% protective protein and 0.02% sodium azide, pH 7.3.
Purification	Affinity Purification

Application

Dilution Ratio	WB 1:500-1:1000,ELISA 1:5000-1:20000
Molecular Weight	Calculated MW: 22 kDa; Observed MW: 22 kDa

Antigen Information

Gene Name	MRPL35
Alternative Names	MRPL35; BM-007; 39S ribosomal protein L35; mitochondrial; L35mt; MRP-L35
Gene ID	51318
SwissProt ID	Q9NZE8
Immunogen	Synthesized peptide derived from MRP-L35 . at AA range: 80-160

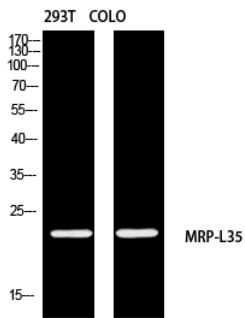
Background

Mammalian mitochondrial ribosomal proteins are encoded by nuclear genes and help in protein synthesis within the mitochondrion. Mitochondrial ribosomes (mitoribosomes) consist of a small 28S subunit and a large 39S subunit.

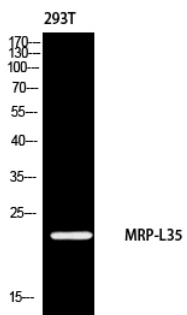
Research Area

Tags & Cell Markers

Image Data



Western blot analysis of MRPL35 in 293T , COLO lysates using MRPL35 antibody.



Western blot analysis of MRPL35 in 293 lysates using MRPL35 antibody.