

**Product Name: CD300d Rabbit Polyclonal Antibody****Catalog #: APRab00570**

For research use only.

**Summary**

<b>Description</b>	Rabbit polyclonal Antibody
<b>Host</b>	Rabbit
<b>Application</b>	WB,ELISA
<b>Reactivity</b>	Human
<b>Conjugation</b>	Unconjugated
<b>Modification</b>	Unmodified
<b>Isotype</b>	IgG
<b>Clonality</b>	Polyclonal
<b>Form</b>	Liquid
<b>Concentration</b>	1mg/ml
<b>Storage</b>	Aliquot and store at -20°C (valid for 12 months). Avoid freeze/thaw cycles.
<b>Shipping</b>	Ice bags
<b>Buffer</b>	Liquid in PBS containing 50% glycerol, 0.5% protective protein and 0.02% sodium azide, pH 7.3.
<b>Purification</b>	Affinity Purification

**Application**

<b>Dilution Ratio</b>	WB 1:500-1:1000,ELISA 1:5000-1:20000
<b>Molecular Weight</b>	Calculated MW: 22 kDa; Observed MW: 22 kDa

**Antigen Information**

<b>Gene Name</b>	CD300LD
<b>Alternative Names</b>	CD300LD; CD300D; CMRF35A4; CMRF35-like molecule 4; CLM-4; CD300 antigen-like family member D; CMRF35-A4; CD300d
<b>Gene ID</b>	100131439
<b>SwissProt ID</b>	Q6UXZ3
<b>Immunogen</b>	The antiserum was produced against synthesized peptide derived from the Internal region of human CD300LD. AA range:61-110

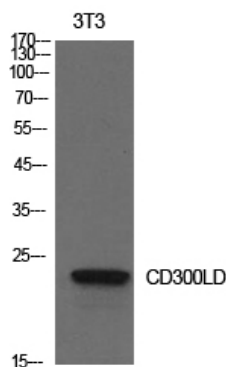
**Background**

Predicted to enable transmembrane signaling receptor activity and virus receptor activity. Predicted to be involved in immune system process. Predicted to act upstream of or within regulation of interleukin-6 production and regulation of tumor necrosis factor production. Predicted to be integral component of membrane. Predicted to be active in plasma membrane.

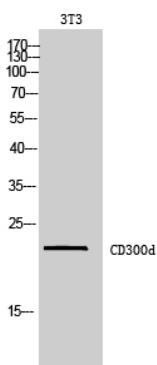
## Research Area

Immunology

## Image Data



Western blot analysis of CD300d in NIH3T3 lysates using CD300d antibody.



Western blot analysis of CD300d in 3T3 lysates using CD300d antibody.