

**Product Name: SIRP alpha/beta Rabbit Polyclonal Antibody****Catalog #: APRab00567**

For research use only.

**Summary**

<b>Description</b>	Rabbit polyclonal Antibody
<b>Host</b>	Rabbit
<b>Application</b>	WB,IHC,ELISA
<b>Reactivity</b>	Human
<b>Conjugation</b>	Unconjugated
<b>Modification</b>	Unmodified
<b>Isotype</b>	IgG
<b>Clonality</b>	Polyclonal
<b>Form</b>	Liquid
<b>Concentration</b>	1mg/ml
<b>Storage</b>	Aliquot and store at -20°C (valid for 12 months). Avoid freeze/thaw cycles.
<b>Shipping</b>	Ice bags
<b>Buffer</b>	Liquid in PBS containing 50% glycerol, 0.5% protective protein and 0.02% sodium azide, pH 7.3.
<b>Purification</b>	Affinity Purification

**Application**

<b>Dilution Ratio</b>	WB 1:500-1:1000,IHC 1:50-1:100,ELISA 1:5000-1:20000
<b>Molecular Weight</b>	Calculated MW: 55 kDa; Observed MW: 55 kDa

**Antigen Information**

<b>Gene Name</b>	SIRPA/SIRPB1
<b>Alternative Names</b>	SIRPA; BIT; MFR; MYD1; PTPNS1; SHPS1; SIRP; Tyrosine-protein phosphatase non-receptor type substrate 1; SHP substrate 1; SHPS-1; Brain Ig-like molecule with tyrosine-based activation motifs; Bit; CD172 antigen-like family member A; CD172a; SIRPB1; Signal-regulatory protein beta-1 isoform 3; SIRP-beta-1 isoform 3
<b>Gene ID</b>	140885/10326
<b>SwissProt ID</b>	P78324/Q5TFQ8
<b>Immunogen</b>	The antiserum was produced against synthesized peptide derived from the Internal region of human SIRPA/SIRPB1. AA range:281-330

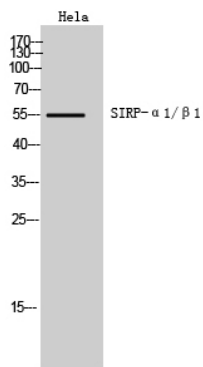
## Background

Immunoglobulin-like cell surface receptor for CD47. Acts as docking protein and induces translocation of PTPN6, PTPN11 and other binding partners from the cytosol to the plasma membrane. Supports adhesion of cerebellar neurons, neurite outgrowth and glial cell attachment.

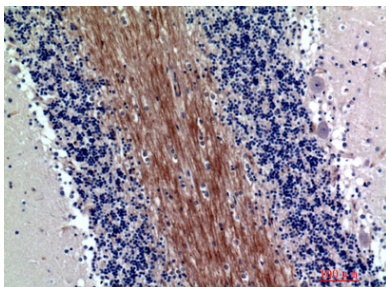
## Research Area

Neuroscience

## Image Data



Western blot analysis of SIRP alpha/beta in HeLa lysates using SIRP alpha/beta antibody.



Immunohistochemistry analysis of paraffin-embedded Human brain using SIRP alpha/beta antibody. High-pressure and temperature Sodium Citrate pH 6.0 was used for antigen retrieval.