
Product Name: Placental Alkaline Phosphatase Rabbit Polyclonal Antibody**Catalog #: APRab00558**

For research use only.

Summary

Description	Rabbit polyclonal Antibody
Host	Rabbit
Application	WB,ELISA
Reactivity	Human,Mouse
Conjugation	Unconjugated
Modification	Unmodified
Isotype	IgG
Clonality	Polyclonal
Form	Liquid
Concentration	1mg/ml
Storage	Aliquot and store at -20°C (valid for 12 months). Avoid freeze/thaw cycles.
Shipping	Ice bags
Buffer	Liquid in PBS containing 50% glycerol, 0.5% protective protein and 0.02% sodium azide, pH 7.3.
Purification	Affinity Purification

Application

Dilution Ratio	WB 1:500-1:1000,ELISA 1:5000-1:20000
Molecular Weight	Calculated MW: 57 kDa; Observed MW: 60 kDa

Antigen Information

Gene Name	ALPP/ALPPL2
Alternative Names	ALPP; PLAP; Alkaline phosphatase; placental type; Alkaline phosphatase Regan isozyme; Placental alkaline phosphatase 1; PLAP-1; ALPPL2; ALPPL; Alkaline phosphatase; placental-likeALP-1; Alkaline phosphatase Nagao isozyme; Germ cell alkaline phosphatase; GCAP; Placental alkaline phosphatase-like; PLAP-like
Gene ID	250/251
SwissProt ID	P05187/P10696
Immunogen	The antiserum was produced against synthesized peptide derived from the N-terminal region of human ALPP/ALPPL2. AA range:1-50

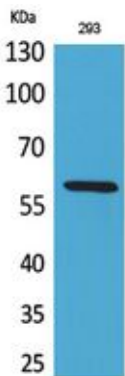
Background

PLAP may assist in guiding migratory cells and transporting specific molecules, such as fatty acids and immunoglobulins, across the plasma membrane. The three tissue-specific APs identified in human, PLAP, germ cell AP (GCAP) and intestinal AP, are 90-98% homologous and their genes are clustered on chromosome 2q.

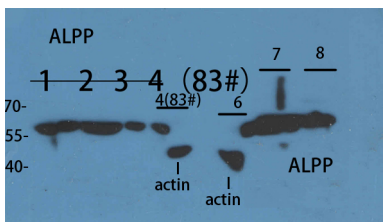
Research Area

Tags & Cell Markers

Image Data



Western blot analysis of Placental Alkaline Phosphatase in 293 lysates using Placental Alkaline Phosphatase antibody.



Western blot analysis of Placental Alkaline Phosphatase in lysates using ALPP/ALPPL2 antibody.

1 2 3 4 customer's cell
 6 293T
 7 HeLa
 8 K562