

Product Name: CD300LG Rabbit Polyclonal Antibody**Catalog #: APRab00556**

For research use only.

Summary

Description	Rabbit polyclonal Antibody
Host	Rabbit
Application	WB,IHC,ELISA
Reactivity	Human
Conjugation	Unconjugated
Modification	Unmodified
Isotype	IgG
Clonality	Polyclonal
Form	Liquid
Concentration	1mg/ml
Storage	Aliquot and store at -20°C (valid for 12 months). Avoid freeze/thaw cycles.
Shipping	Ice bags
Buffer	Liquid in PBS containing 50% glycerol, 0.5% protective protein and 0.02% sodium azide, pH 7.3.
Purification	Affinity Purification

Application

Dilution Ratio	WB 1:500-1:1000,IHC 1:50-1:100,ELISA 1:5000-1:20000
Molecular Weight	Calculated MW: 36 kDa; Observed MW: 36 kDa

Antigen Information

Gene Name	CD300LG
Alternative Names	CD300LG; CLM9; TREM4; CMRF35-like molecule 9; CLM-9; CD300 antigen-like family member G; Triggering receptor expressed on myeloid cells 4; TREM-4; CD300g
Gene ID	146894
SwissProt ID	Q6UXG3
Immunogen	The antiserum was produced against synthesized peptide derived from the Internal region of human CD300LG. AA range:41-90

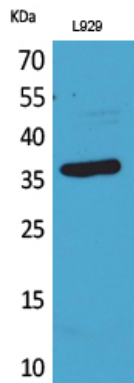
Background

Receptor which may mediate L-selectin-dependent lymphocyte rollings.

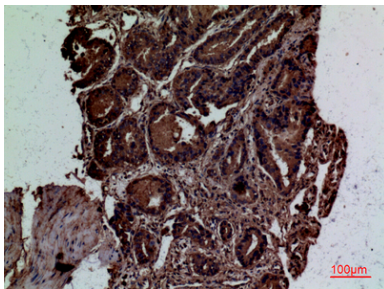
Research Area

Immunology

Image Data



Western blot analysis of CD300LG in L929 lysates using CD300LG antibody.



Immunohistochemistry analysis of paraffin-embedded Human prostate cancer using CD300LG antibody. High-pressure and temperature Sodium Citrate pH 6.0 was used for antigen retrieval.