

Product Name: KLF12 Rabbit Polyclonal Antibody**Catalog #: APRab00551**

For research use only.

Summary

Description	Rabbit polyclonal Antibody
Host	Rabbit
Application	WB,IHC,ELISA
Reactivity	Human,Mouse
Conjugation	Unconjugated
Modification	Unmodified
Isotype	IgG
Clonality	Polyclonal
Form	Liquid
Concentration	1mg/ml
Storage	Aliquot and store at -20°C (valid for 12 months). Avoid freeze/thaw cycles.
Shipping	Ice bags
Buffer	Liquid in PBS containing 50% glycerol, 0.5% protective protein and 0.02% sodium azide, pH 7.3.
Purification	Affinity Purification

Application

Dilution Ratio	WB 1:500-1:1000,IHC 1:50-1:100,ELISA 1:5000-1:20000
Molecular Weight	Calculated MW: 44 kDa; Observed MW: 44 kDa

Antigen Information

Gene Name	KLF12
Alternative Names	KLF12; AP2REP; HSPC122; Krueppel-like factor 12; Transcriptional repressor AP-2rep
Gene ID	11278
SwissProt ID	Q9Y4X4
Immunogen	Synthesized peptide derived from the Internal region of human KLF12.

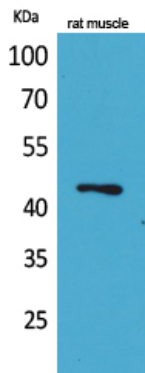
Background

Confers strong transcriptional repression to the AP-2-alpha gene.

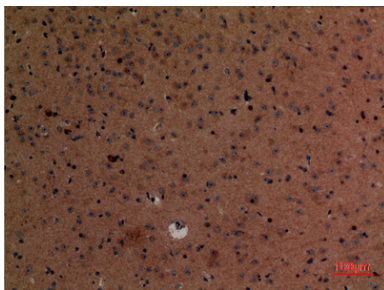
Research Area

Epigenetics and Nuclear Signaling

Image Data



Western blot analysis of KLF12 in rat muscle lysates using KLF12 antibody.



Immunohistochemistry analysis of paraffin-embedded mouse brain using KLF12 antibody. High-pressure and temperature Sodium Citrate pH 6.0 was used for antigen retrieval.