

Summary

Production Name	IL-15 Rabbit Polyclonal Antibody
Description	Rabbit Polyclonal Antibody
Host	Rabbit
Application	IHC-P,ELISA
Reactivity	Human

Performance

Conjugation	Unconjugated
Modification	Unmodified
Isotype	IgG
Clonality	Polyclonal
Form	Liquid
Storage	Store at 4°C short term. Aliquot and store at -20°C long term. Avoid freeze/thaw cycles.
Buffer	Liquid in PBS containing 50% glycerol, 0.5% protective protein and 0.02% sodium azide, pH 7.3.
Purification	Affinity Purification

Immunogen

Gene Name	IL15
Alternative Names	Interleukin-15 (IL-15)
Gene ID	3600
SwissProt ID	P40933.

Application

Dilution Ratio	IHC: 1:50-1:100 ELISA: 1:10000
Molecular Weight	-

Background

Product Name: IL-15 Rabbit Polyclonal Antibody
Catalog #: APRab00540

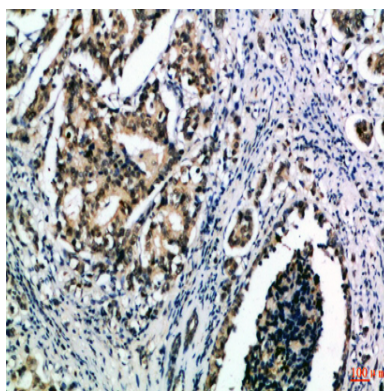


The protein encoded by this gene is a cytokine that regulates T and natural killer cell activation and proliferation. This cytokine and interleukine 2 share many biological activities. They are found to bind common hematopoietin receptor subunits, and may compete for the same receptor, and thus negatively regulate each other's activity. The number of CD8+ memory cells is shown to be controlled by a balance between this cytokine and IL2. This cytokine induces the activation of JAK kinases, as well as the phosphorylation and activation of transcription activators STAT3, STAT5, and STAT6. Studies of the mouse counterpart suggested that this cytokine may increase the expression of apoptosis inhibitor BCL2L1/BCL-x(L), possibly through the transcription activation activity of STAT6, and thus prevent apoptosis. Alternatively spliced transcript variants of this gene have been reported.

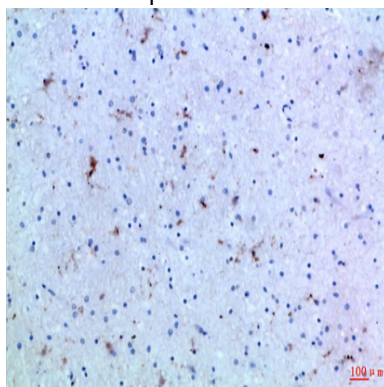
Research Area

Immunology

Image Data

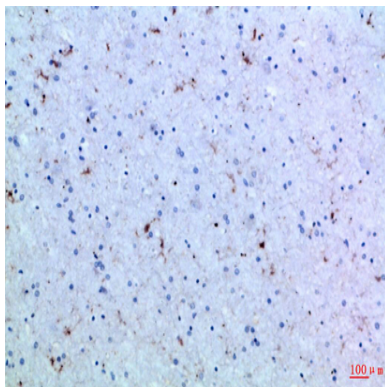


Immunohistochemistry analysis of paraffin-embedded Human breastcancer using IL-15 antibody.High-pressure and temperature Sodium Citrate pH 6.0 was used for antigen retrieval.



Immunohistochemical analysis of paraffin-embedded Human tonsils using IL-15 antibody.High-pressure and temperature Sodium Citrate pH 6.0 was used for antigen retrieval.

Product Name: IL-15 Rabbit Polyclonal Antibody
Catalog #: APRab00540



Immunohistochemistry analysis of paraffin-embedded Human brain using IL-15 antibody. High-pressure and temperature Sodium Citrate pH 6.0 was used for antigen retrieval.

Note

For research use only.