

Product Name: Dectin-2 Rabbit Polyclonal Antibody**Catalog #: APRab00532**

For research use only.

Summary

Description	Rabbit polyclonal Antibody
Host	Rabbit
Application	WB,IHC,ELISA
Reactivity	Human
Conjugation	Unconjugated
Modification	Unmodified
Isotype	IgG
Clonality	Polyclonal
Form	Liquid
Concentration	1mg/ml
Storage	Aliquot and store at -20°C (valid for 12 months). Avoid freeze/thaw cycles.
Shipping	Ice bags
Buffer	Liquid in PBS containing 50% glycerol, 0.5% protective protein and 0.02% sodium azide, pH 7.3.
Purification	Affinity Purification

Application

Dilution Ratio	WB 1:500-1:1000,IHC 1:50-1:100,ELISA 1:5000-1:20000
Molecular Weight	Calculated MW: 24 kDa; Observed MW: 24 kDa

Antigen Information

Gene Name	CLEC6A Dectin-2; CLEC6A; CLECSF10; DECTIN2; C-type lectin domain family 6 member A; C-type
Alternative Names	lectin superfamily member 10; Dendritic cell-associated C-type lectin 2; DC-associated C-type lectin 2; Dectin-2
Gene ID	93978
SwissProt ID	Q6EIG7
Immunogen	Synthesized peptide derived from the Internal region of human Dectin-2.

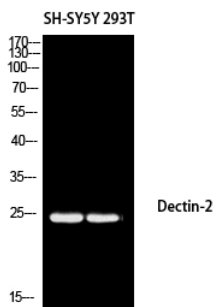
Background

Like dectin-1 (CLEC7A; MIM 606264), CLEC6A, or dectin-2, is a type II membrane receptor with an extracellular C-type lectin-like domain fold. However, unlike dectin-1, dectin-2 lacks an immunoreceptor tyrosine-based activation motif (ITAM) in its cytoplasmic domain

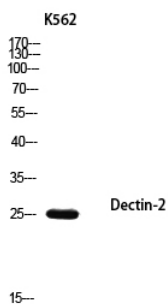
Research Area

Immunology

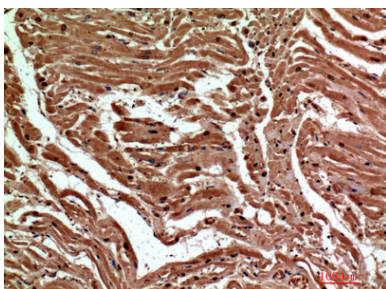
Image Data



Western blot analysis of Dectin-2 in SH-SY5Y, 293T lysates using Dectin-2 antibody.



Western blot analysis of Dectin-2 in K562 lysates using Dectin-2 antibody.



Immunohistochemistry analysis of paraffin-embedded Human heart using Dectin-2 antibody. High-pressure and temperature Sodium Citrate pH 6.0 was used for antigen retrieval.